

THIS DOCUMENT IS THE PROPERTY OF BOSTON WHALER, INC. MFG. DEPT., EDGEWATER, FLORIDA. ALL RIGHTS ARE RESERVED. THIS DOCUMENT AND INFORMATION CONTAINED MUST NOT BE COPIED OR DISCLOSED TO OTHERS WITHOUT WRITTEN PERMISSION OF BOSTON WHALER, INC.

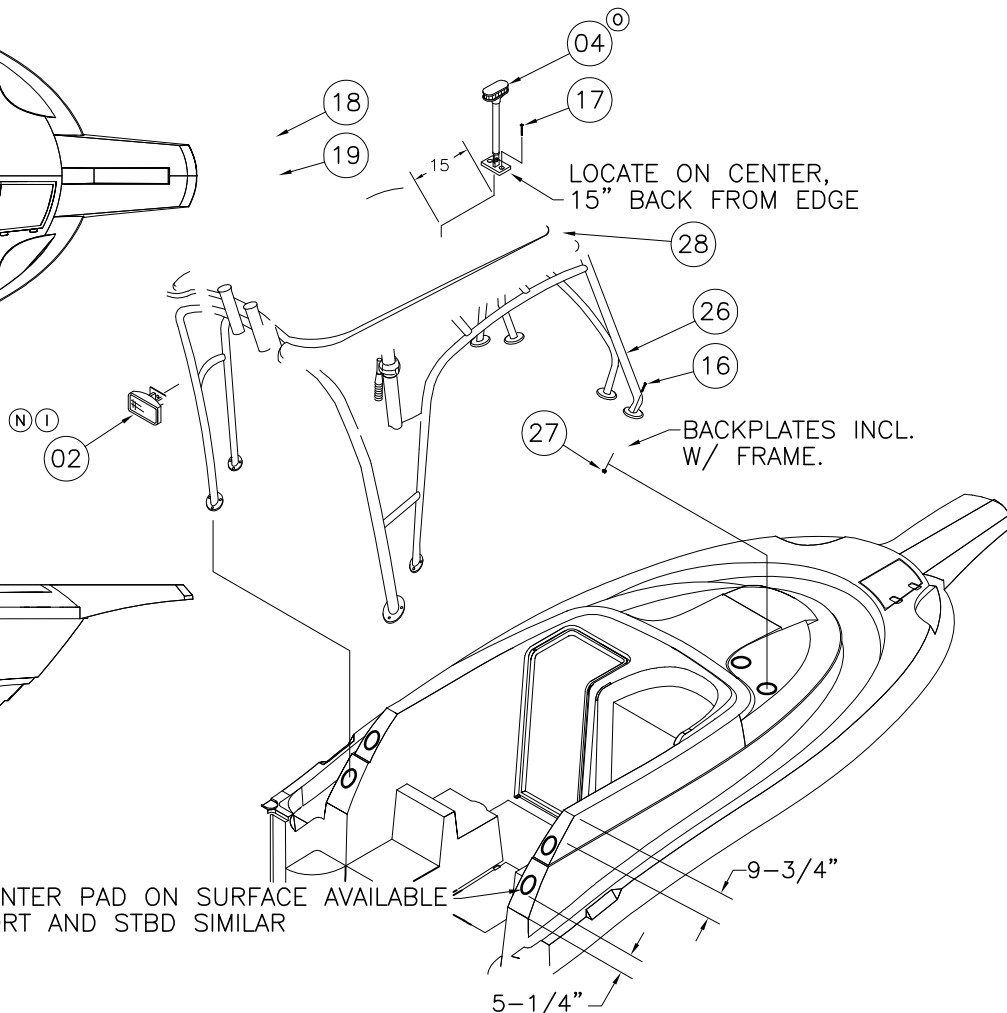
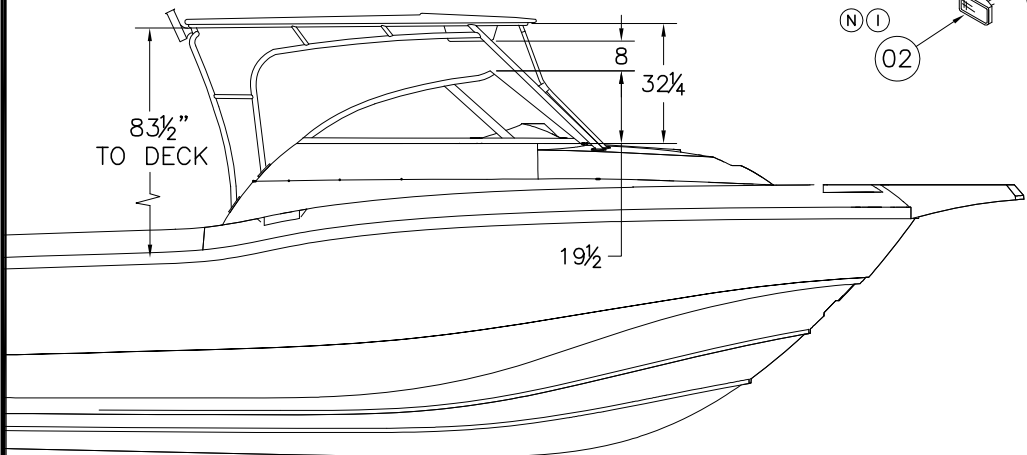
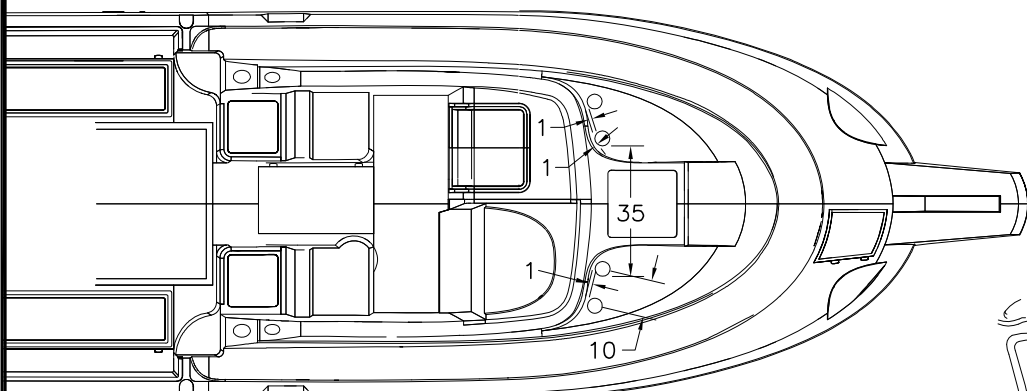
DWG. NO:
08401

REV.
P

CURRENT ECD
08125680

NOTES:

REVISIONS					
REV.	DESCR.	BY	DATE	APPVD.	ECN NO.
L	ADDED TRIM SPEC TO PRINT., SHEET4.	JC	08/14/06	DJW	060869
M	CHANGED DESCR. ITEM 32 TO SCREW, CHANGED ITEM 32 SHEET 4 TO 33	SLJ	10/11/06	AVM	0604106
N	CHANGE PN# & DESCRIPTION ITEM 2, SHEETS 1 & 5	SLJ	11/13/06	DJW	06113772
O	CHANGE PN#4 ON DWG	TKJ	5/2/08	AVF	08045139
P	Changed PN# 1753044, 1753051 to 1964045, 1964046	SG	9/2/09	AVR	08125680



CENTER PAD ON SURFACE AVAILABLE
PORT AND STBD SIMILAR

INTERPRET DIMENSIONS AND TOLERANCES PER ANSI Y 14.5
UNLESS OTHERWISE SPECIFIED DIMENSIONS ARE IN INCHES.
TOLERANCES: ANGLES = ± .5° .XXX = ± .010
.X = ± .1 .XX = ± .03
X/X = ± 1/16
DO NOT SCALE DRAWING



CHECKED: RA	DATE: 7/04/01	DRAWN: H READ	DATE: 07/03/01	SCALE: NONE	BOAT MODEL	MOLD NO.
APPD: LMS	DATE: 7/04/01	DWG. TITLE:			255CQ	
DESIGN: LMS	DATE: 7/04/01	HARDTOP CANVAS ASSEMBLY AND INSTALLATION			INIT. REL. ECN NO:	DWG. NO:
INT. ENG: MG	DATE: 7/06/01				2276	08401
					SHT. NO.	
					1	of 5

THIS DOCUMENT IS THE PROPERTY OF BOSTON WHALER, INC. MFG. DEPT., EDGEWATER, FLORIDA. ALL RIGHTS ARE RESERVED. THIS DOCUMENT AND INFORMATION CONTAINED MUST NOT BE COPIED OR DISCLOSED TO OTHERS WITHOUT WRITTEN PERMISSION OF BOSTON WHALER, INC.

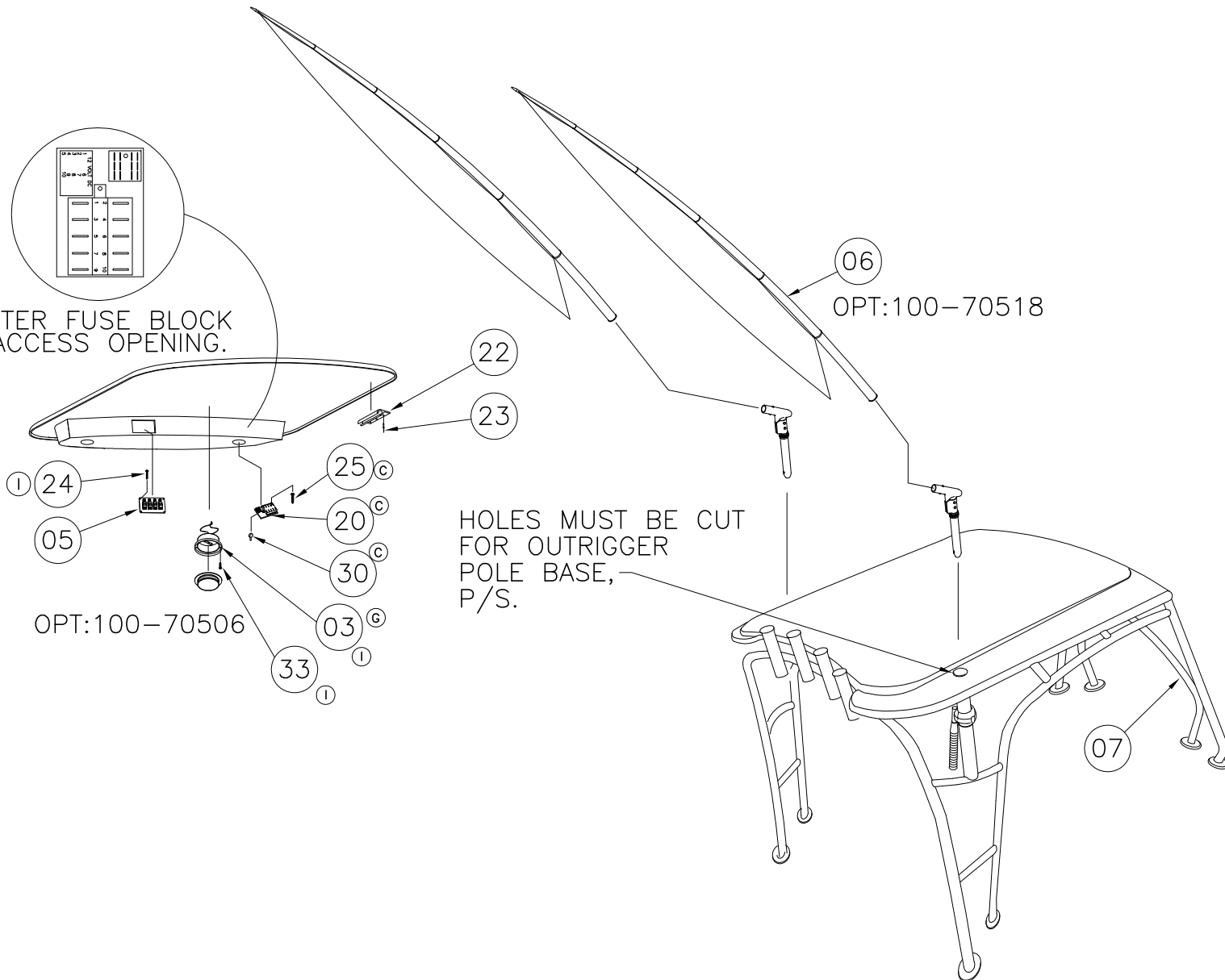
DWG. NO:
08401

REV.
P

CURRENT ECD
08125680

NOTES:

CENTER FUSE BLOCK
IN ACCESS OPENING.



HOLES MUST BE CUT
FOR OUTRIGGER
POLE BASE,
P/S.

OPT:100-70506

OPT:100-70518

INTERPRET DIMENSIONS AND TOLERANCES PER ANSI Y 14.5
UNLESS OTHERWISE SPECIFIED DIMENSIONS ARE IN INCHES.
TOLERANCES: ANGLES = $\pm .5^\circ$.XXX = $\pm .010$
.X = $\pm .1$.XX = $\pm .03$ $\frac{X}{X}$ = $\pm 1/16$
DO NOT SCALE DRAWING

DRAWN: H READ DATE:07/03/01 SCALE: NONE

DWG. TITLE:
HARDTOP CANVAS ASSEMBLY AND INSTALLATION

BOAT MODEL
255CQ

MOLD NO.

INIT. REL. ECN NO:
2276

DWG. NO:
08401

SHT. NO.
2 OF 5

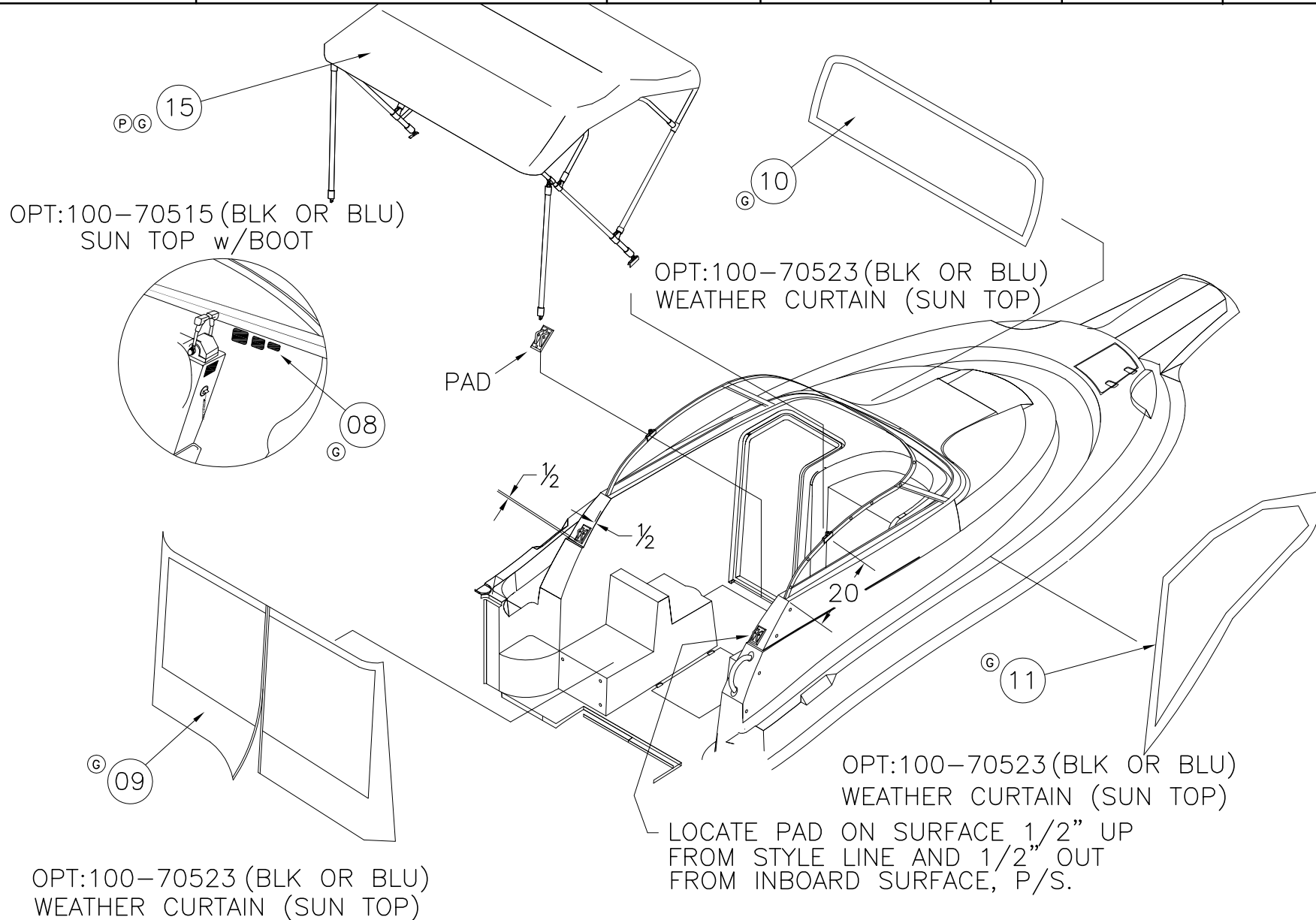
THIS DOCUMENT IS THE PROPERTY OF BOSTON WHALER, INC. MFG. DEPT., EDGEWATER, FLORIDA. ALL RIGHTS ARE RESERVED. THIS DOCUMENT AND INFORMATION CONTAINED MUST NOT BE COPIED OR DISCLOSED TO OTHERS WITHOUT WRITTEN PERMISSION OF BOSTON WHALER, INC.

DWG. NO:
08401

REV.
P

CURRENT ECD
08125680

NOTES:



INTERPRET DIMENSIONS AND TOLERANCES PER ANSI Y 14.5 UNLESS OTHERWISE SPECIFIED DIMENSIONS ARE IN INCHES.
TOLERANCES: ANGLES = $\pm .5^\circ$.XXX = $\pm .010$
.X = $\pm .1$
.XX = $\pm .03$ $\frac{X}{X}$ = $\pm 1/16$
DO NOT SCALE DRAWING

DRAWN: H READ DATE: 07/03/01 SCALE: NONE
DWG. TITLE: HARDTOP CANVAS ASSEMBLY AND INSTALLATION

BOAT MODEL: 255CQ
INIT. REL. ECN NO: 2276

MOLD NO.
DWG. NO: 08401

SHT. NO. 3 OF 5

THIS DOCUMENT IS THE PROPERTY OF BOSTON WHALER, INC. MFG. DEPT., EDGEWATER, FLORIDA. ALL RIGHTS ARE RESERVED. THIS DOCUMENT AND INFORMATION CONTAINED MUST NOT BE COPIED OR DISCLOSED TO OTHERS WITHOUT WRITTEN PERMISSION OF BOSTON WHALER, INC.

DWG. NO:
08401

REV.
P

CURRENT ECD
08125680

NOTES:

(L) TRIM AT 3/8" ENTIRE PART

(E) VINYL TRACK ON VERTICAL FACE
45" FRONT, 7" SIDES

(M) (D) (31) (32)
P&S

SECTION A

Ø5.5"
P&S

OPT:100-70506
100-70518

ALUM.
FRAME

BREAKER
CUTOUT

(C)
OPT:100-70525
(BLK OR BLU)
WEATHER CURTAIN
(HARD TOP)

BREAKER PANEL CUT OUT
CENTER HORIZ. AND VERTICALLY

OPT:100-70525 (BLK OR BLU)
WEATHER CURTAIN (HARD TOP)

OPT:100-70525 (BLK OR BLU)
WEATHER CURTAIN (HARD TOP)



INTERPRET DIMENSIONS AND TOLERANCES PER ANSI Y 14.5
UNLESS OTHERWISE SPECIFIED DIMENSIONS ARE IN INCHES.
TOLERANCES: ANGLES = ± .5° .XXX = ± .010
.X = ± .1
.XX = ± .03 X = ± 1/16
DO NOT SCALE DRAWING

DRAWN: H READ DATE:07/03/01 SCALE: NONE
DWG. TITLE:
HARDTOP CANVAS ASSEMBLY AND INSTALLATION

BOAT MODEL
255CQ

MOLD NO.

INIT. REL. ECN NO:
2276

DWG. NO:
08401

SHT. NO.
4 OF 5

THIS DOCUMENT IS THE PROPERTY OF BOSTON WHALER, INC. MFG. DEPT., EDGEWATER, FLORIDA. ALL RIGHTS ARE RESERVED. THIS DOCUMENT AND INFORMATION CONTAINED MUST NOT BE COPIED OR DISCLOSED TO OTHERS WITHOUT WRITTEN PERMISSION OF BOSTON WHALER, INC.

DWG. NO:
08401

REV.
P

CURRENT ECD
08125680

NOTES:

Parts List					
	ITEM	QTY	U/M	DESCRIPTION	B.W.I. NO.
(N)(I)	2	1	EA.	SPOTLIGHT, HALOGEN 12V FLOOD 55W WHT	1885625
(I)(G)	3	1	EA.	LIGHT, SGL DOME FLUSH MT SS WHT/RED	1761590
(O)	4	1	EA.	LIGHT, NAV A/R 24" VERT MNT FOLDING	1751342
(G)	5	1	EA.	PANEL, BW255CQ-04 SWITCH HARDTOP	1754877
	6	1	PR.	OUTRIGGER POLES 16'	1614270
(I)	7	1	EA.	FRAME, BW255CQ-05 H/TOP W/RADIAL OUTRIGGERS	1775382
	8	1	EA.	LABEL, BW WARNING CARBON MONOXIDE CANVAS ENCL.	1110675
(G)	9	1	EA.	CANVAS, BW255CQ-04 BIM TOP DROP CURT BLK	1753046
	9A	1	EA.	CANVAS, 255CQ-02 BIM TOP DROP CURT BLUE	1611771
(G)	10	1	EA.	CANVAS, BW255CQ-04 BIM TOP VISOR CURT BLK	1753047
	10A	1	EA.	CANVAS, BW255CQ-02 BIM TOP VISOR CURT BLUE	1611797
(G)	11	1	EA.	CANVAS, BW255CQ-04 BIM TOP SIDE CURT SET BLK	1753045
	11A	1	EA.	CANVAS, BW255CQ-04 BIM TOP SIDE CURT SET BLUE	1611813
(G)	12	1	EA.	CANVAS, BW255CQ-04 H/T DROP CURT BLK	1753048
	12A	1	EA.	CANVAS, BW255CQ-02 H/T DROP CURT BLUE	1611839
(G)	13	1	EA.	CANVAS, BW255CQ-04 H/T VISOR CURT BLK	1753050
	13A	1	EA.	BW255CQ-02 H/T VISOR CURT BLUE	1611854
(G)	14	1	EA.	CANVAS, BW255CQ-04 H/T SIDE CURT SET BLK	1753049
	14A	1	EA.	CANVAS, BW255CQ-02 H/T SIDE CURT SET BLUE	1611888
(P)(G)	15	1	EA.	CANVAS, BW255CQ-09 BIM TOP W/MNT BLK	1964045
(P)(G)	15A	1	EA.	CANVAS, BW255CQ-09 BIM TOP W/MNT BLUE	1964046
	16	24	EA.	SCREW, MACHINE 1/4"-20 x 1.5 PPH SC	1008598
	17	2	EA.	SCREW, TAPPING #10A x 3/4" PTH SC	1008762
	18	12	EA.	SCREW, CAP #1/4-20 x 2" HEX HD SC	1480102
	19	12	EA.	WASHER, FENDER 1/4" x 1.25" SC	1260678
(C)	20	1	EA.	FUSE BLOCK, 10-GNG BLADE-TYPE W/BLANK	1688102
	22	17.3	FT.	CANVAS, BW-00 SLIDE TRACK HARDTOP	1357730
(F)	23	26	EA.	SCREW, TAPPING #6 x 3/4" PFH SC	1010370
(I)	24	4	EA.	SCREW, TAPPING #6A x 1/2" PTH SC	1008796
(C)	25	4	EA.	SCREW, TAPPING #8A x 1" PTH SC	1008804
(I)	26	1	EA.	FRAME, BW255CQ-05 H/T BRUSHED FINISH	1770966
	27	24	EA.	NUT, HEX NYLON LOCK #1/4-20 SC	1007764
	28	1	EA.	FIBERGLASS HARDTOP	22-K036-00
(J)	29	25	FT.	TRIM-SEAL, #X1333BT SELF-ADH BLK	1232156
(C)	30	1	EA.	BOOT, PVC TERMINAL INSULATOR CAP RED	1689904
(D)	31	2	EA.	ACCESS PLATE, POLYPROP TWIST-OUT 5"	1016153
(M)(F)(D)	32	12	EA.	SCREW, TAPPING #8A x 5/8" PPH SC	1010677
(M)(I)	33	17	EA.	RIVET, POP/BLIND #3/16 X 5/8"	189415



INTERPRET DIMENSIONS AND TOLERANCES PER ANSI Y 14.5 UNLESS OTHERWISE SPECIFIED DIMENSIONS ARE IN INCHES.
 TOLERANCES: ANGLES = ± .5° .XXX = ± .010
 .X = ± .1 .XX = ± .03
 X = ± 1/16
 DO NOT SCALE DRAWING

DRAWN: H READ

DATE: 07/03/01

SCALE: NONE

BOAT MODEL

MOLD NO.

DWG. TITLE:

HARDTOP CANVAS ASSEMBLY AND INSTALLATION

255CQ

INIT. REL. ECN NO:

DWG. NO:

2276

08401

SHT. NO.

5 of 5