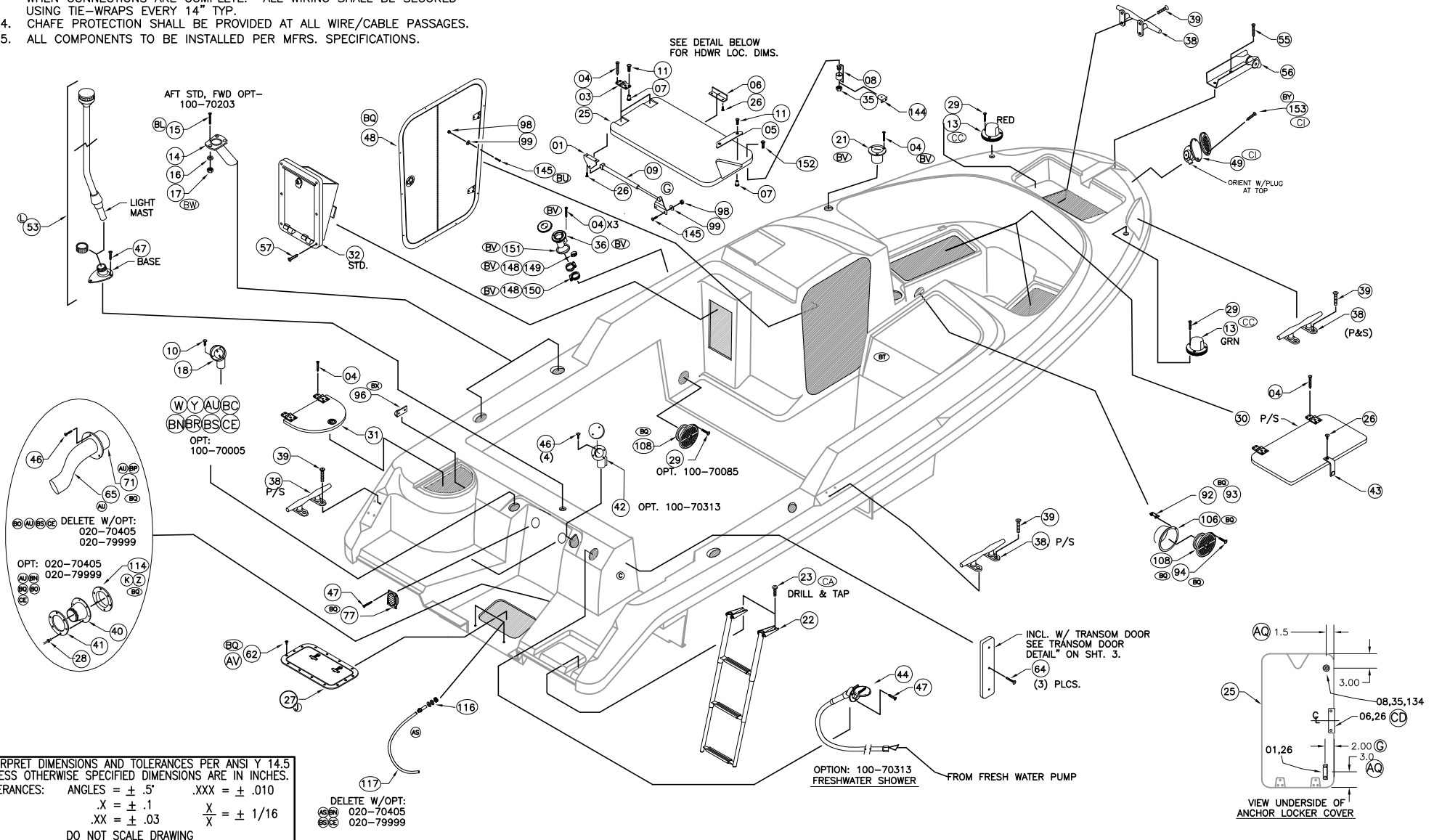


THIS DOCUMENT IS THE PROPERTY OF BOSTON WHALER, INC. MFG. DEPT., EDGEWATER, FLORIDA. ALL RIGHTS ARE RESERVED. THIS DOCUMENT AND INFORMATION CONTAINED MUST NOT BE COPIED OR DISCLOSED TO OTHERS WITHOUT WRITTEN PERMISSION OF BOSTON WHALER, INC.

DWG. NO: 06200
 REV. CK
 CURRENT ECD 08095526


REVISIONS					
REV.	DESCR.	BY	DATE	APPVD.	ECN NO.
CI	MVE "09" ITEM # 49 WAS 1780938, DELETED #50, QTY #105 WAS 6, ADDED #153	SLJ	05/12/08		08045161
CJ	CHANGED PT#1355585,1109370 TO 1911342,996371	TJ	7/15/08	AF	08055263
CK	INVERTED WATER FILTER TO A DOWNWARD POSITION	TJ	10/28/08	AF	08095526

- ALL HOSE & LINE ROUTINGS SHALL COMPLY WITH NMMA, USCG STDS. & ABYC RECOMMENDATIONS. SECURE EVERY 14" TYPICAL.
- ALL BILGE COMPONENT HOSES SHALL BE DOUBLE CLAMPED WITH CLAMP SCREWS 180 DEG. TO EACH OTHER.
- ALL ELECTRICAL CONNECTIONS SHALL BE SPRAYED W/ T-9 PROTECTANT WHEN CONNECTIONS ARE COMPLETE. ALL WIRING SHALL BE SECURED USING TIE-WRAPPS EVERY 14" TYP.
- CHAFE PROTECTION SHALL BE PROVIDED AT ALL WIRE/CABLE PASSAGES.
- ALL COMPONENTS TO BE INSTALLED PER MFRS. SPECIFICATIONS.



INTERPRET DIMENSIONS AND TOLERANCES PER ANSI Y 14.5 UNLESS OTHERWISE SPECIFIED DIMENSIONS ARE IN INCHES.
 TOLERANCES: ANGLES = ± .5° .XXX = ± .010
 .X = ± .1 X = ± 1/16
 .XX = ± .03 X = ± 1/16
 DO NOT SCALE DRAWING

DELETE W/OPT:
 020-70405
 020-79999

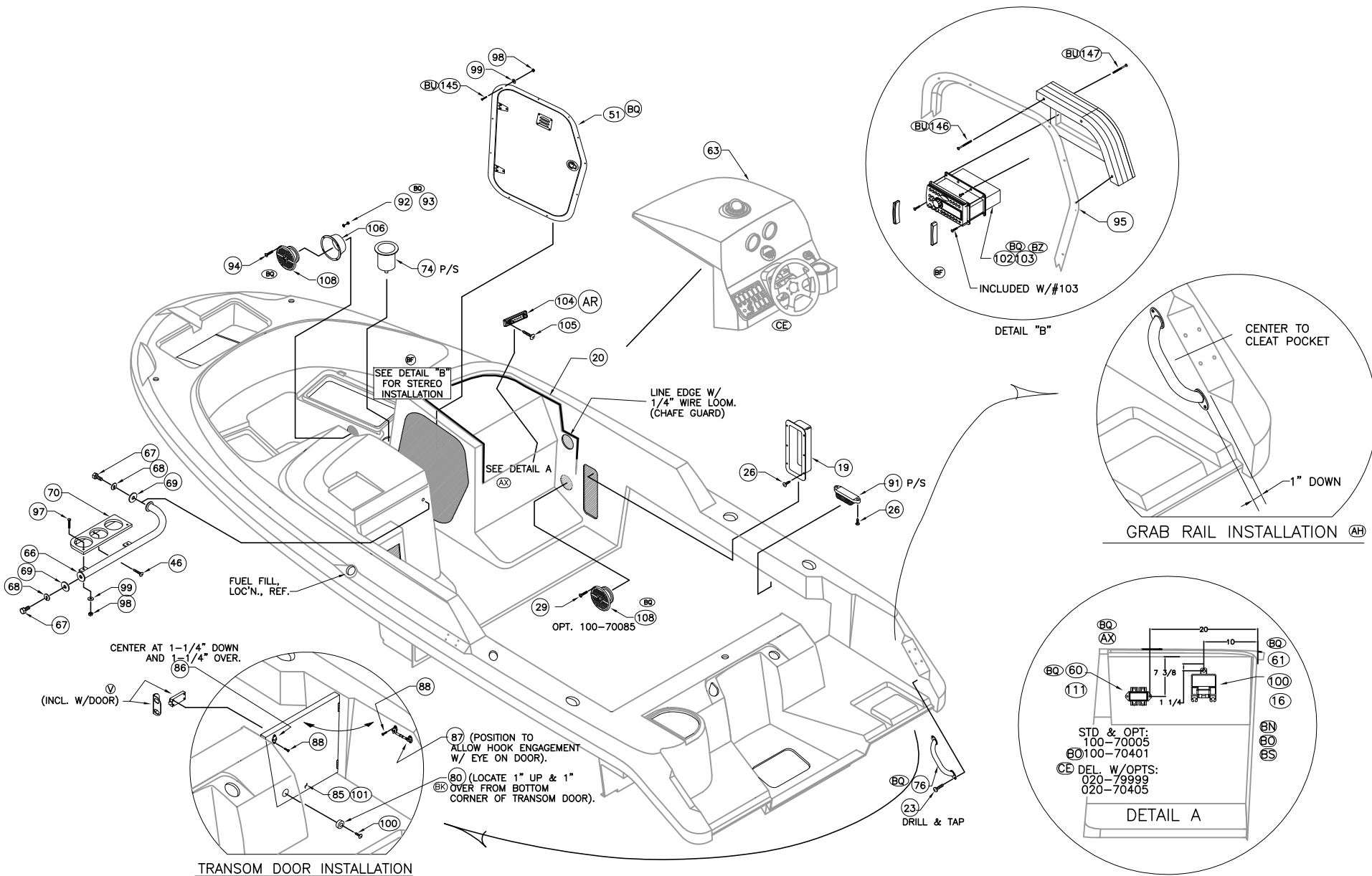
 PRODUCT DEV. & MFG. ENGINEERING GROUP	CHECKED: J. MILLER	DATE: 10/22/99	DRAWN: R. DURHAM	DATE: 10/22/99	SCALE: NONE	BOAT MODEL	MOLD NO.
	APPD: M. MITCHELL	DATE: 6/20/00	DWG. TITLE:	Deck Assembly		210VT	18J96702
DESIGN: J. MILLER	DATE: 10/22/99	INIT. REL. ECN NO:	DWG. NO:	R8007		06200	SHT. NO.
INT. ENG: L. SCHOLZ	DATE: 10/22/99						1 OF 6

THIS DOCUMENT IS THE PROPERTY OF BOSTON WHALER, INC. MFG. DEPT., EDGEWATER, FLORIDA. ALL RIGHTS ARE RESERVED. THIS DOCUMENT AND INFORMATION CONTAINED MUST NOT BE COPIED OR DISCLOSED TO OTHERS WITHOUT WRITTEN PERMISSION OF BOSTON WHALER, INC.

DWG. NO:
06200

REV.
CK

CURRENT ECD
08095526

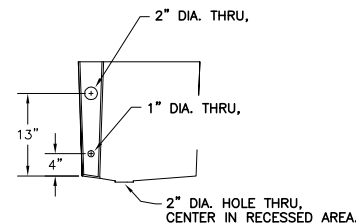
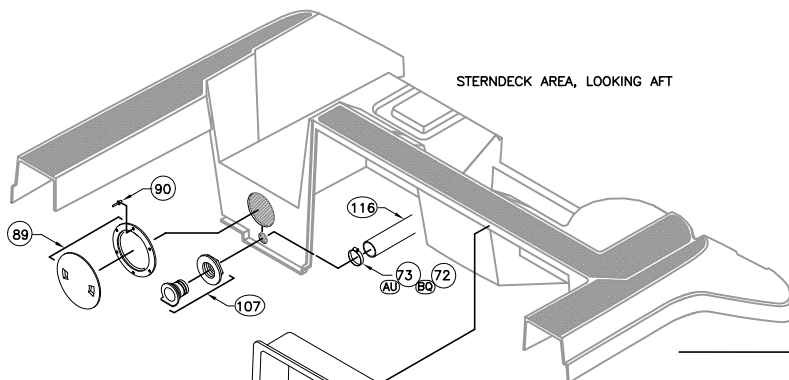


THIS DOCUMENT IS THE PROPERTY OF BOSTON WHALER, INC. MFG. DEPT., EDGEWATER, FLORIDA. ALL RIGHTS ARE RESERVED. THIS DOCUMENT AND INFORMATION CONTAINED MUST NOT BE COPIED OR DISCLOSED TO OTHERS WITHOUT WRITTEN PERMISSION OF BOSTON WHALER, INC.

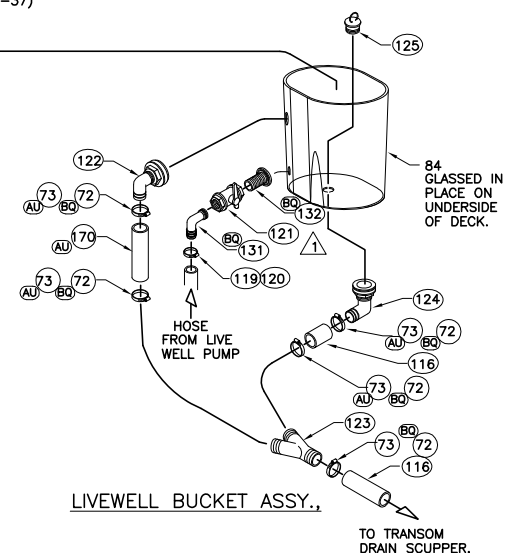
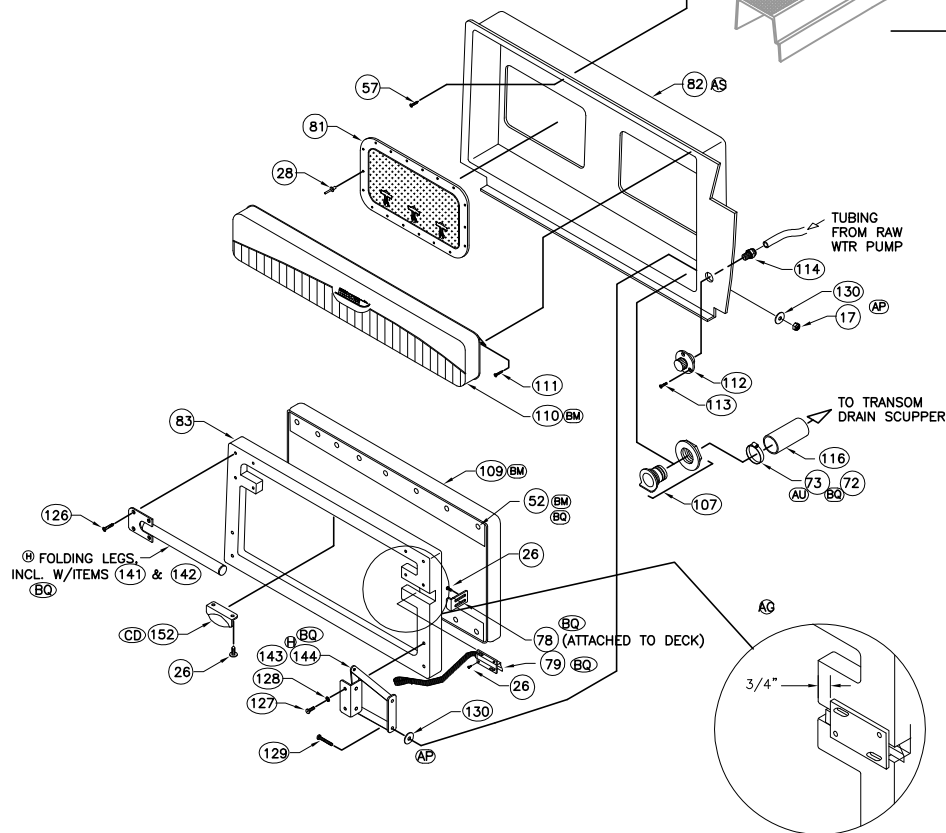
DWG. NO:
06200

REV.
CK

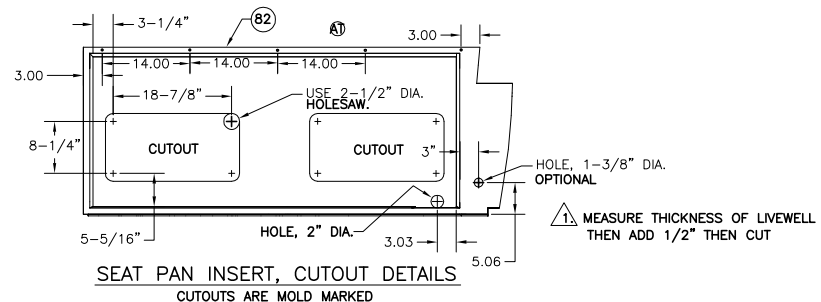
CURRENT ECD
08095526



STORAGE & LIVEWELL
BUCKET CUTOUTS, LOOKING AFT
(USE FIXTURE: 21-37)



LIVEWELL BUCKET ASSY.,



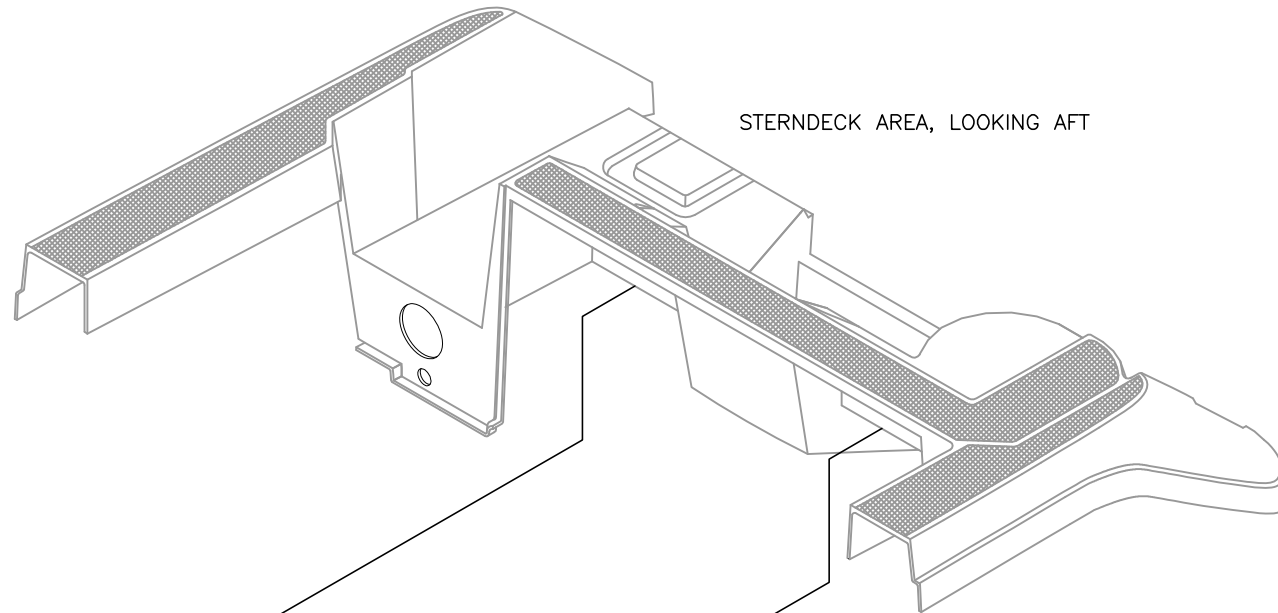
SEAT PAN INSERT, CUTOUT DETAILS
CUTOUTS ARE MOLD MARKED

THIS DOCUMENT IS THE PROPERTY OF BOSTON WHALER, INC. MFG. DEPT., EDGEWATER, FLORIDA. ALL RIGHTS ARE RESERVED. THIS DOCUMENT AND INFORMATION CONTAINED MUST NOT BE COPIED OR DISCLOSED TO OTHERS WITHOUT WRITTEN PERMISSION OF BOSTON WHALER, INC.

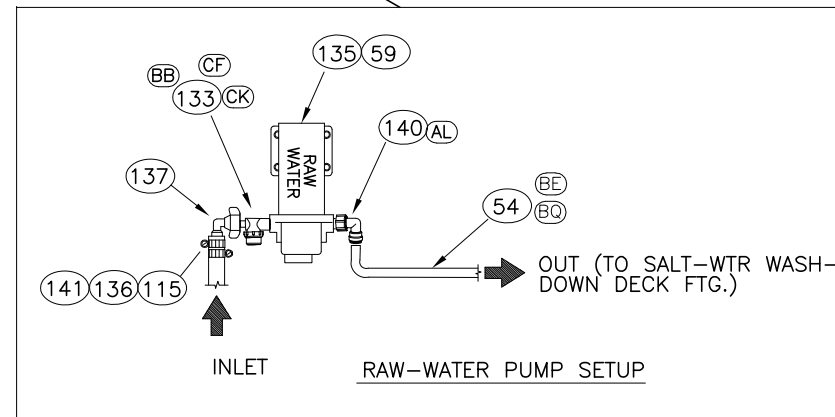
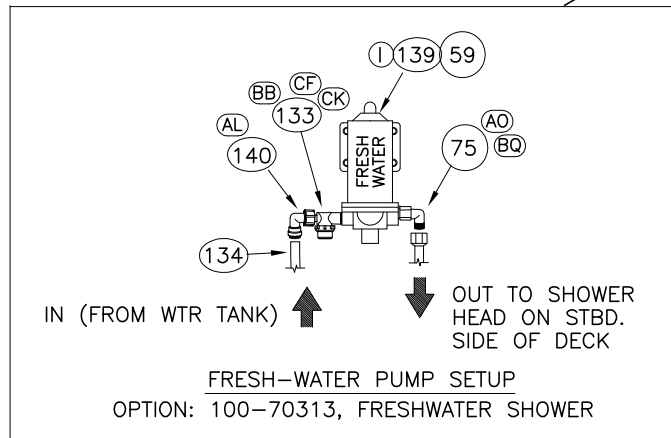
DWG. NO:
06200

REV.
CK

CURRENT ECD
08095526



STERNDECK AREA, LOOKING AFT



INTERPRET DIMENSIONS AND TOLERANCES PER ANSI Y 14.5 UNLESS OTHERWISE SPECIFIED DIMENSIONS ARE IN INCHES.
TOLERANCES: ANGLES = ± .5° .XXX = ± .010
.X = ± .1 X = ± 1/16
.XX = ± .03

DO NOT SCALE DRAWING

DRAWN: R.DURHAM

DATE: 10/22/99

SCALE: NONE

BOAT MODEL

MOLD NO.

210VT

18J96702

DWG. TITLE:

Deck Assembly

INIT. REL. ECN NO:

DWG. NO:

R8007

06200

SHT. NO.

4 of 6

THIS DOCUMENT IS THE PROPERTY OF BOSTON WHALER, INC. MFG. DEPT., EDGEWATER, FLORIDA. ALL RIGHTS ARE RESERVED. THIS DOCUMENT AND INFORMATION CONTAINED MUST NOT BE COPIED OR DISCLOSED TO OTHERS WITHOUT WRITTEN PERMISSION OF BOSTON WHALER, INC.

DWG. NO:
06200

REV.
CK

CURRENT ECD
08095526

BILL OF MATERIAL

ITEM	QTY.	U/M	DESCRIPTION	B.M.L. NO.
01	1	EA.	BRACKET, SS LIFT CYL. 90 DEG.	0817676
02	1	EA.	BRACKET, SS LIFT CYL OFFSET W/STUD	0995084
03	6	EA.	HINGE, DOOR SS 1.5" x 3"	1617323
04	46	EA.	SCREW, TAPPING #10A x 1" POH SC	1008507
05	1	EA.	HANDLE, SS BW-210R-97 HATCH	1014455
06	1	EA.	FRAME, BW-08 EDGE GUARD SS	1887724
07	8	EA.	NUT, BBL #10-24 x 3/8" FH	1040187
08	1	EA.	STOP, DOOR HOLDER RBR BLUE	1142348
09	1	EA.	CYLINDER, GAS 20PSI 10"EXT x 7"COMP	1253236
10	18	EA.	SCREW, TAPPING, #8A x 5/8" PTH SC	1010925
11	8	EA.	SCREW, MACHINE #10-24 x 5/8" POH SC	1010545
12	2	EA.	SCREW, TAPPING #6A x 5/8" PFH SC	1010396
13	1	PR.	LIGHT, NAV LED SURF HORIZ MT SS	1888325
14	2	EA.	ROD HOLDER, FLUSH MNT SS W/BW-05 LOGO	1799571
15	6	EA.	SCREW, MACHINE 1/4-20 x 1.75" POH SC	0133744
16	9	EA.	WASHER, FLAT 1/4" SC	1260769
17	12	EA.	NUT, LOCK #1/4-20 SC STD PATT	1009786
18	1	EA.	ACC PART, MERC OIL FILL KIT (DECK)	0733105
19	1	EA.	BOX, ABS FIRE EXT SHORT WHT	1037555
20	1	EA.	ADHESIVE, WELD-ON SS 214 2PART 470ML	1558485
21	1	EA.	DECK PLATE, WASTE CHR STRAIGHT NCK N/CUR CODE	1911342
22	1	EA.	LADDER, SWIM 3-STEP TELESCOP	1034859
23	6	EA.	SCREW, MACHINE 1/4-20 x 1.25" PPH SC	1260975
24	2	EA.	WASHER, FENDER 1/4" x 1.25" SC	1260678
25	1	EA.	FIBERGLASS PART, ANCHOR LOCKER COVER	22642600
26	16	EA.	SCREW, TAPPING #8A x 1/2" PTH SC	1008812
27	1	EA.	HATCH, UTILITY 13.5" x 16.5" WHT	1719060
28	38	EA.	RIVET, POP/BLIND 3/16" x 5/8" ALUM	0189415
29	6	EA.	SCREW, TAPPING #4A x 1" PFH SC	1010321
30	2	EA.	COVER, HDPE BW210VT-03 BOW STRG SEA	1727628
31	1	EA.	COVER, HDPE BW210VT-03 LVEWELL W/L	1727635
32	1	EA.	BIN, HDPE/PLEX SEAFOAM	1062520
33	3	EA.	SCREW, MACHINE #10-24 x 1.5" POH SC	1305788
34	13	EA.	WASHER, FLAT #10 SC	1260751
35	14	EA.	NUT, HEX NYLON LOCK #10-24 SC	1007772
36	1	EA.	DECK PLATE, GAS CHR W/VENT STRAIGHT NECK	996371
37	1	EA.	SCREW, MACHINE #10-24 x 2" POH SC	1010479
38	7	EA.	CLEAT, 8" 4-BOLT SS	291658
39	24	EA.	SCREW, MACHINE 1/4-20 x 1" PFH SC	1009950
40	1	EA.	BOOT, CABLE 3" BLK	1043223
41	1	EA.	BOOT, CABLE RING 3" BLK	1043330
42	1	EA.	DECK PLATE, WATER CHR W/VENT 45DEG.	1109362
43	2	EA.	STRAP, W/S HOLD OPEN	1025220
44	1	EA.	WASHDOWN/SPRAYER, VERT MNT WHT W/BW LOGO	1612928
45	1	EA.	DRAIN, 1" MFGACT W/O BARB BLK	1044953
46	13	EA.	SCREW, TAPPING #10A x 1" PTH SC	1008739
47	24	EA.	SCREW, TAPPING #8A x 3/4" POH SC	1213057
48	1	EA.	DOOR, ACRY BW210VT-06 HEAD BIFOLD	1817800
49	1	EA.	HORN, SGL CONCEALED W/SS GRILL/CONN	1837054
50	1	EA.	HORN, GRILL SGL SS OVERLAY SERIES 84400-1	1781252
51	1	EA.	DOOR, ACRY BW210VT-06 CNLS STB	1807559
52	14	EA.	SNAP STUD, W/#8 x 3/8" PH BR/N	203786
53	1	EA.	LIGHT, STERN PLUG-IN 62" 16DEG. BEND	1592633
54	3.5	FT.	TUBING, SEATECH 15MM X 11MM X 250' GRN	1758297
55	4	EA.	SCREW, MACHINE 1/4-20 x 1.5" POH SC	1010438
56	1	EA.	ROLLER, ANCHOR BOW	1034834
57	24	EA.	SCREW, TAPPING #10A x 1.25" PFH SC	1259415
58	2	EA.	STEERING, ELBOW BR 9/16" ORFS FEMALE X MALE	1790999
59	2	EA.	STEERING, ELBOW SS 11/4" ORFS FEMALE X MALE	1791000
60	1	EA.	ACC PART, MERC S-CRT JUNC BOX 4-WAY	1507326
61	1	EA.	ACC PART, MERC SGL PNL COMMAND MODULE KIT 06	1802839
62	10	EA.	SCREW, MACHINE #10-24 x 3/4" PPH SC SELF-TAP	1781122
63	1	EA.	CONSOLE - SUB-ASSY'ed	09-201
64	10	EA.	SCREW, TAPPING #8A x 1.5" POH SC	1255462
65	6.66	FT	HOSE, 2"ID CABLE COVER (OUTBOARD) BLK	1024237
66	1	EA.	RAIL, GRAB CONSOLE PORT SS	1271909
67	2	EA.	SCREW, CAP 5/16-18 x 1.5" HEX HD SC	1008044
68	2	EA.	WASHER, LOCK/SPLIT 5/16" SC	1260611
69	2	EA.	WASHER, FENDER 5/16" x 1.5" SC	1326180
70	1	EA.	HOLDER, PLEX DRINK CONSOLE	1290154
71	1	EA.	FLANGE, RIGGING BOOT 2" BLK	1818344
72	8	EA.	COVER, CLAMP END PROT 1/2"L x .045"X .465"	0830968
73	8	EA.	CLAMP, HOSE #24 1"-2" SS .505	0256693
74	10	FT.	HOSE, SANI 1.5" BLK PVC 149 SERIES	1746048

INTERPRET DIMENSIONS AND TOLERANCES PER ANSI Y 14.5 UNLESS OTHERWISE SPECIFIED DIMENSIONS ARE IN INCHES.
 TOLERANCES: ANGLES = ± .5° .xxx = ± .010
 .X = ± .1 X = ± 1/16
 .XX = ± .03 X = ± 1/16
 DO NOT SCALE DRAWING

DRAWN: R.DURHAM

DATE: 10/22/99

SCALE: NONE

BOAT MODEL

MOLD NO.

DWG. TITLE:

Deck Assembly

210VT

18J96702

INIT. REL. ECN NO:

DWG. NO:

SHT. NO.

R8007

06200

5 OF 6



THIS DOCUMENT IS THE PROPERTY OF BOSTON WHALER, INC. MFG. DEPT., EDGEWATER, FLORIDA. ALL RIGHTS ARE RESERVED. THIS DOCUMENT AND INFORMATION CONTAINED MUST NOT BE COPIED OR DISCLOSED TO OTHERS WITHOUT WRITTEN PERMISSION OF BOSTON WHALER, INC.

DWG. NO:
06200

REV.
CK

CURRENT ECD
08095526

BILL OF MATERIAL

ITEM	QTY.	U/M	DESCRIPTION	B.M.L. NO.
(BO) 75	1	EA.	ELBOW, ACETAL 1/2"MP T X 1/2"FP T X 90DEG	172551
(BO) 76	1	EA.	RAIL, GRAB BWCQ-97 N/STUD 8 5/8" X 1" SS	1011675
(BO) 77	2	EA.	VENT, LOUVERED 3 5/8" X 3 5/8" WH T	0819243
(BO) 78	1	EA.	BRACKET, MOBELLA STRIKE SS	1609791
(BO) 79	1	EA.	LATCH, SLAM 2/ 30" STRAP	1046788
(BO) 80	1	EA.	BUMPER, BLACK	1039239
81	2	EA.	HATCH, UTILITY 13" x 23" WH T.	0682302
82	1	EA.	FIBERGLASS PART, SEAT PAN INSERT	2296100
83	1	EA.	FIBERGLASS PART, SEAT PAN BASE	22933401
84	1	EA.	FIBERGLASS PART, LIVEWELL BUCKET	2296200
85	1	EA.	DOOR, HDPE BW210VT-03 TRNSM SEAFM	1727626
86	1	EA.	HOOK, CABIN DOOR EYE ONLY	0996348
87	1	EA.	HOOK, CABIN DOOR 2" CHR/BRZ	0996647
88	4	EA.	SCREW, TAPPING #6A x 1/2" PFH	1010362
89	1	EA.	ACCESS PLATE POLYPROP TWIST OUT 5"	1016153
90	6	EA.	LIGHT, COURTESY SURF MNT CLR/GND	1062355
(BO) 91	3	EA.	NUT, HEX NYLON LOCK #4-40 SC	1667245
(BO) 92	8	EA.	WASHER, FLAT 4-40 SC	1259639
(BO) 93	8	EA.	SCREW, MACHINE #4-40 X 1" PFH SC	1259472
(BO) 94	8	EA.	PANEL, HDPE BW210VT-06 CLOSUT STEREO	1805653
(BO) 95	1	EA.	BRACKET, BW-07 LATCH STRIKE W/BEND SS	1873367
(BO) 96	1	EA.	SCREW, MACHINE #8-32 x 1.25" PTH SC	1008721
97	2	EA.	NUT, LOCK #8-32 SC	1009927
98	22	EA.	WASHER, FLAT #8 SC	1326297
99	22	EA.	SCREW, TAPPING #10A x 3/4" PTH SC	1008762
100	3	EA.	SCREW, TAPPING #6A x 1" PFH SC	1010354
101	4	EA.	ANTENNA LEAD, STEREO SOFT WIRE 30"	0875484
(BO) 102	1	EA.	STEREO, AM/FM CD W/CHNGR/SIR SAT PLAYER CMD5	1894055
(BO) 103	1	EA.	BUSS BAR, MINIBUS BAR DC	1524334
(BO) 104	2	EA.	SCREW, TAPPING #8A x 1" PTH SC	1008804
(BO) 105	4	EA.	COVER, ABS BW-97 SPKR 7 1/8" RAD WH T	1047836
(BO) 106	2	EA.	THRU-HULL, PLAS 1.5" L-FLANGE W/BARB	1072826
(BO) 107	2	EA.	SPEAKER, COAXIAL 6.5" W/WH T CVR & W	1690555
(BO) 108	4	EA.	CUSH, BW210VT-05 STERN SEAT	1781449
109	1	EA.	CUSH, BW210VT-05 STERN SEAT B/R	1781500
110	1	EA.	SCREW, TAPPING #8A x 1/2" PTH SC	1008812
111	13	EA.	FITTING, RAW WTR OUTLET SS	1718983
112	1	EA.	SCREW, TAPPING #8A x 1/2" PTH SC	1010578
(BO) 113	3	EA.	GROMMET, CABLE BOOT 3" BLK	1574839
114	1	EA.	CLAMP, HOSE #10	263954
115	1	EA.	STEERING, BLKHD 3/4" FITTING MALE TO MALE	1773917
116	1	EA.	STEERING, O/B HOSE KIT CYL/HELM 1' W/2 HOSES	1773895
117	1	EA.	COVER, MACHINE #10-24 x1.75" PTH SC	1341973
(BO) 118	1	EA.	COVER, CLAMP END PROT 1/2" x .020"	1116870
119	1	EA.	CLAMP, HOSE #16, 3/4"-1.5" SS	0256685
120	1	EA.	VALVE, MARELON BALL 2-WAY 3/4"	557959
121	1	EA.	THRU-HULL, PLAS 1.5" ELBOW W/SCREEN	1233725
122	1	EA.	COUPLING, PLAS "Y" 1.5" BLK	1747278
123	1	EA.	DRAIN, ELBOW 90DEG 1.5" W/FLANGE NUT	1041961
124	1	EA.	PLUG, DRAIN 1.5" BLK	0907279
125	1	EA.	SCREW, TAPPING #10A x 1" PPH SC	1008507
126	8	EA.	SCREW, MACHINE 1/4-20 x 1" PPH SC	1008580
127	4	EA.	WASHER, STAR 1/4" SS	1008929
128	4	EA.	SCREW, MACHINE 1/4-20 x 1.5" PPH SC	1008598
129	4	EA.	WASHER, FENDER 1/4" x 1.25"	1260678
130	8	EA.	THRU-HULL, PLAS 3/4" MPT X 3/4" BARBX90"	567958
(BO) 131	1	EA.	THRU-HULL, PLAS 3/4" WH T	18964
(BO) 132	1	EA.	FILTER, INLINE WTR SWVEL 1/2" MPSM X 1/2" NPSF	1896340
(BO) 133	2	EA.	TUBING, SEATECH 15MM X 11MM X 250' BLUE	1210160
134	0	FT.	PUMP, WASHDOWN 4.0GPM 45PSI PROBLASTE	1913891
(CH) 135	1	EA.	HOSE, WATER 3/4" BLK REINF PVC	1042100
136	13	FT.	ELBOW, PVC 1/2" FPT SWVEL X 3/4" BARB X 90	0626101
137	1	EA.	TEE, ACETAL 1/2" MPT	206003
138	1	EA.	PUMP, FRESH WTR 3.0GPM AQUAKING STD	1913982
(CG) 139	1	EA.	FITTING, NEPT 1/2" FEM X 15MM ELB SWVL 90DEG	1453935
140	1	EA.	SUPPORT, LEG FLDNG STERN ST RIGHT	1601533
(BO) 141	2	EA.	SUPPORT, LEG FLDNG STERN ST LEFT	1601525
(BO) 142	2	EA.	HINGE, BWCQ/OR-00 FOLDING SEAT LEFT	1423953
(BO) 143	2	EA.	HINGE, BWCQ/OR-00 FOLDING SEAT RIGHT	1423961
(BO) 144	2	EA.	SCREW, MACHINE #8-32 X 3/4" PTH SC	1010735
(BO) 145	20	EA.	SCREW, TAPPING #8A X 1.5" PTH SC	1172642
(BO) 146	3	EA.	SCREW, TAPPING #10A X 2.5" PTH SC	1760271
(BO) 147	4	EA.	COVER, CLAMP END PROT 1/2" L X .045" X .465" RED	0835068
148	3	EA.	CLAMP, HOSE #10 SS	0263954
(BV) 149	1	EA.	DECK PLATE, GAS CHR W/VENT (SHIM ONLY)	1098615
(BV) 150	2	EA.	HANDLE, SS PULL SURF MNT 1" X 5"	1887723
(BV) 151	1	EA.	SCREW, TAPPING #10A X 1" PPH SC	1008507
(CD) 152	1	EA.	SCREW, TAPPING #10A X 1" PPH SC	1008507
(CI) 153	2	EA.	SCREW, TAPPING #10A X 1" PPH SC	1008507



INTERPRET DIMENSIONS AND TOLERANCES PER ANSI Y 14.5 UNLESS OTHERWISE SPECIFIED DIMENSIONS ARE IN INCHES.
 TOLERANCES: ANGLES = + .5° .xxx = ± .010
 .x = ± .1 x = ± 1/16
 .xx = ± .03 x = ± 1/16
 DO NOT SCALE DRAWING

DRAWN: R.DURHAM
 DWG. TITLE: Deck Assembly

DATE: 10/22/99

SCALE: NONE

BOAT MODEL
210VT

MOLD NO.
18J96702

INIT. REL. ECN NO:
R8007

DWG. NO:
06200

SHT. NO.
6 OF 6