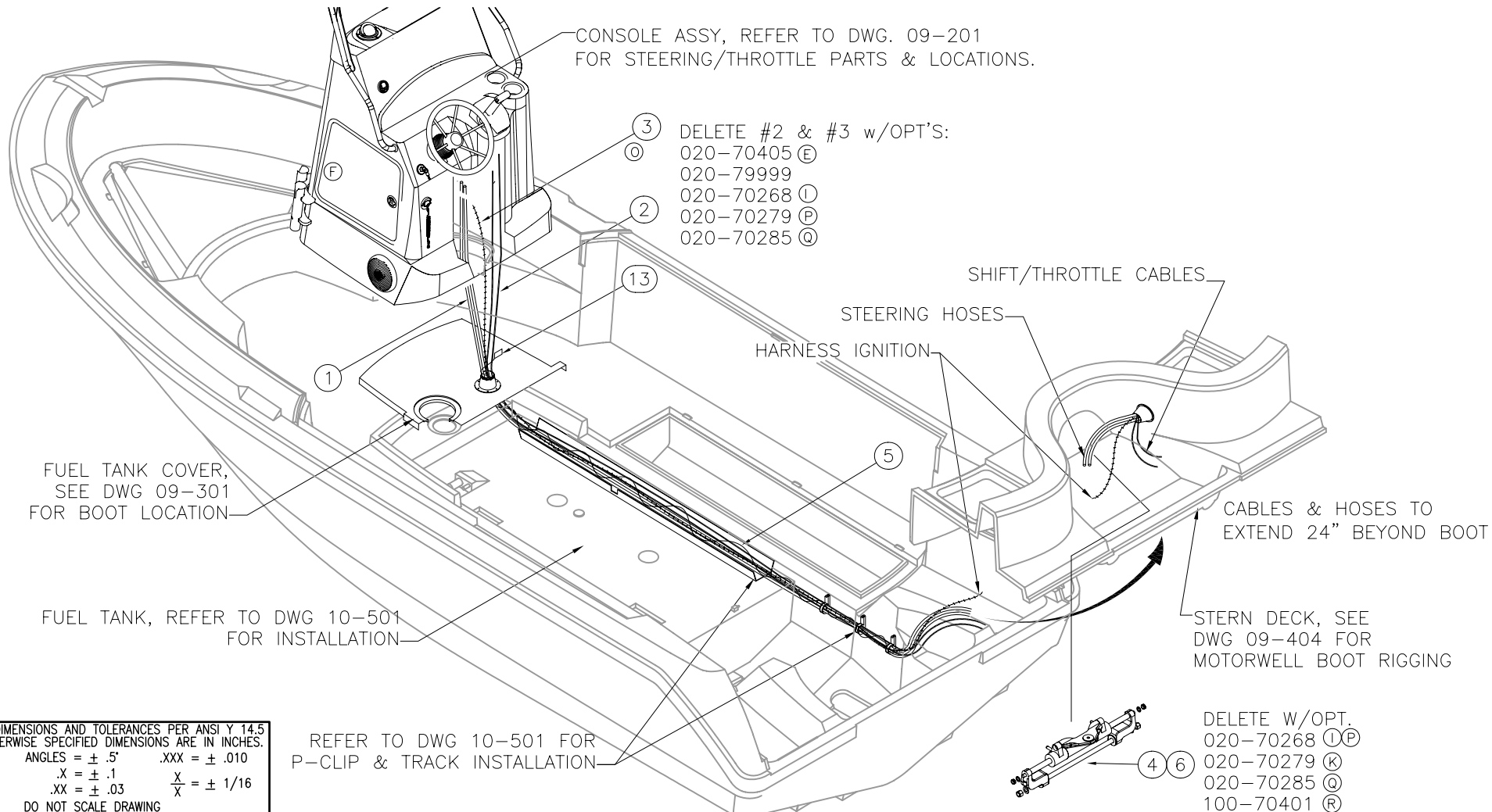


THIS DOCUMENT IS THE PROPERTY OF BOSTON WHALER, INC. MFG. DEPT., EDGEWATER, FLORIDA. ALL RIGHTS ARE RESERVED. THIS DOCUMENT AND INFORMATION CONTAINED MUST NOT BE COPIED OR DISCLOSED TO OTHERS WITHOUT WRITTEN PERMISSION OF BOSTON WHALER, INC.

DWG. NO: 10401	REV. R	CURRENT ECD 051123
-------------------	-----------	-----------------------

- CONNECT CABLES IN ACCORDANCE w/MANUFACTURERS INSTALLATION SHEET.
- CABLES TO BE SECURED SEPARATELY FROM ELECTRICAL & FUEL LINES.
- ROUTE CABLES TO AVOID TWIST OR KINKING.
- HYDRAULIC STEERING HOSE MUST BE PROTECTED FROM CHAFING.
- MIN. BEND RADIUS FOR CONTROL CABLES IS 12".
- MIN. BEND RADIUS FOR HYDRAULIC STEERING HOSE IS 2 1/2".
- ALL CABLES ARE TO BE RUN PRIOR TO CAPPING.
- FILL BOOT WITH EXPANDING FOAM AFTER FINAL ASSEMBLY EXCEPT FOR BLANK PANEL NO ENGINE.

REVISIONS					
REV.	DESCR.	BY	DATE	APPVD.	ECN NO.
K	MYE '06: DELETED #17 (OPT 020-70238)	MRZ	04/05/05	MG	05-03-34
L	MYE '06: #2 P/N WAS 1757749	MRZ	05/06/05	MG	05-04-37
M	MYE '06: #20 P/N WAS 1773925	SLJ	05/09/05	ME	05-04-62
N	MYE 2006: #3 P/N WAS 1032788	MRZ	05/31/05	MG	05-05-05
O	MYE 2006: ITEM# 06 P/N WAS 0102632	MRZ	06/01/05	MG	05-05-100
P	MYE '06: ADD OPT.020-70279; ADD #22&#23; ADD SHEET 5	MRZ	06/07/05	MG	05-05-41
Q	ADD OPT. 020-70285	GD	10/06/05	RA	05-07-21
R	ADD OPT. 100-70401	GD	11/11/05	RA	05-11-23



INTERPRET DIMENSIONS AND TOLERANCES PER ANSI Y 14.5 UNLESS OTHERWISE SPECIFIED DIMENSIONS ARE IN INCHES.  
 TOLERANCES: ANGLES = ± .5°    .XXX = ± .010  
 .X = ± .1    X = ± 1/16  
 .XX = ± .03    X = ± 1/16  
 DO NOT SCALE DRAWING



CHECKED: H. WOOD	DATE: 8/7/01	DRAWN: R. CRAVEN	DATE: 08/06/01	SCALE: NONE	BOAT MODEL 2100R	MOLD NO.
APPD: RA	DATE: 8/6/01	DWG. TITLE: Steering/ Throttle and Trim Tab Installation		INIT. REL. ECN NO: 01060	DWG. NO: 10401	SHT. NO. 1 of 5
DESIGN: L. SCHOLZ	DATE: 8/7/01	INT. ENG: M. GATICA	DATE: 10/3/01			

NOTES:

- A APPLY TEFLON PRIOR TO ASSEMBLY OF TRIM TAB CONNECTIONS THRU HULL.
- B APPLY BOSTIC PRIOR TO INSTALLATION
- C TIGHTEN ALL FASTENERS & CONNECTIONS DURING INSTALLATION
- D ROUTING OF HOSES SHOULD BE NEAT & SECURED EVERY 14" W/PROPER FASTENER
- E. CUT TYWRAPS CLEAN & EVEN
- F. CLEAN EXCESS BOSTIC & SEALANTS
- G. TIGHTEN & SECURE ALL FASTENERS & CONNECTIONS

OPTION: 100-70067

NOTE: TO AVOID CRACKING PLASTIC DO NOT OVER TIGHTEN.

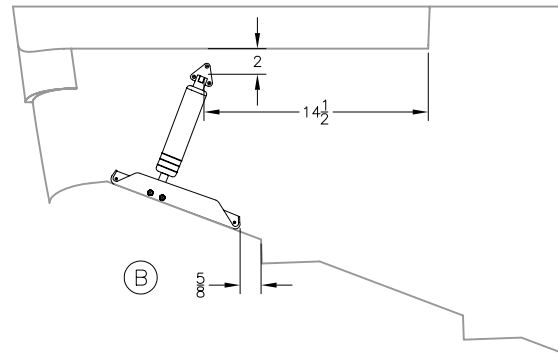
SWITCH LOCATED ON CONSOLE, SEE DWG 09-201

SEE DWG 06-151 FOR PUMP LOCATION

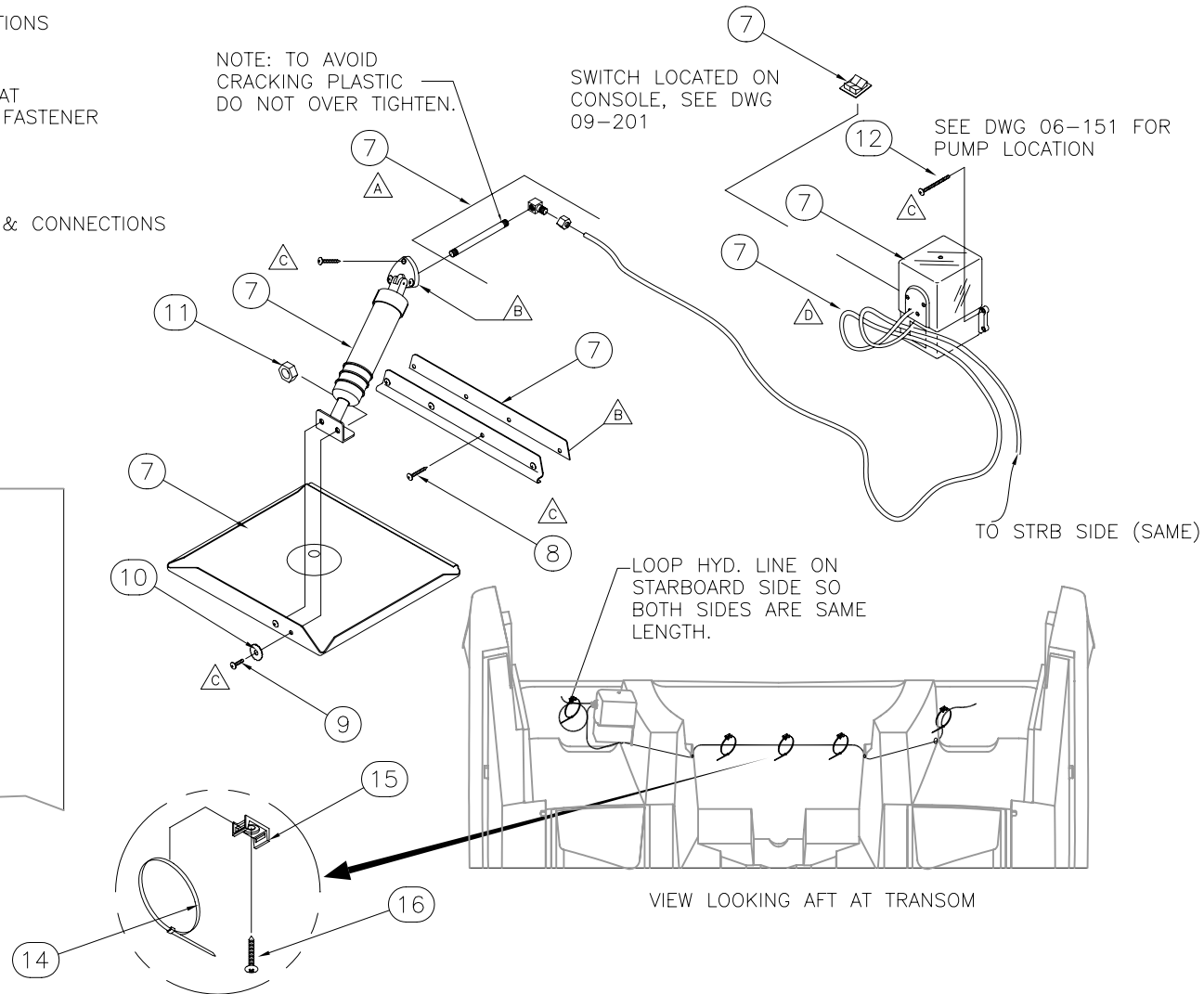
TO STRB SIDE (SAME)

LOOP HYD. LINE ON STARBOARD SIDE SO BOTH SIDES ARE SAME LENGTH.

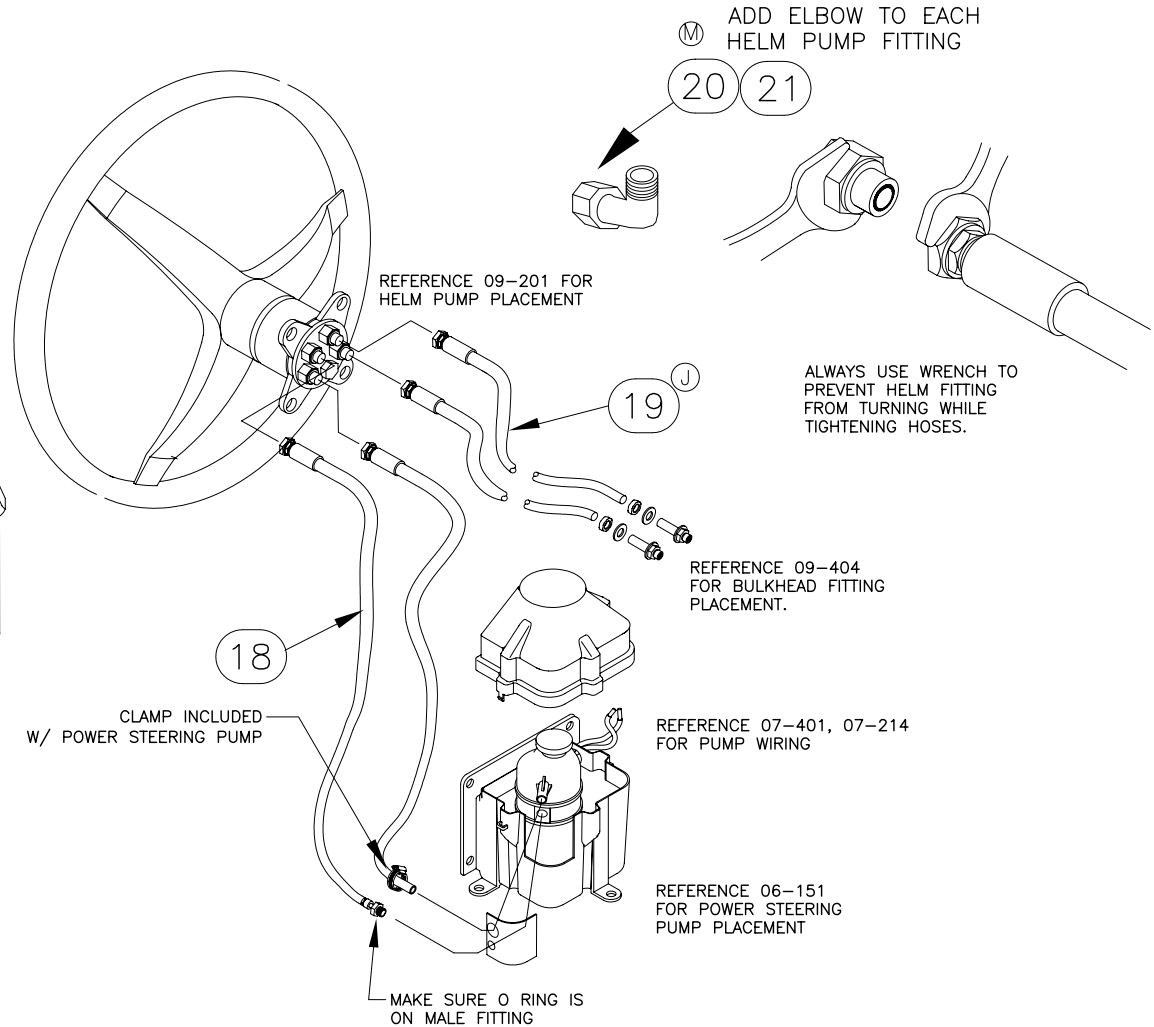
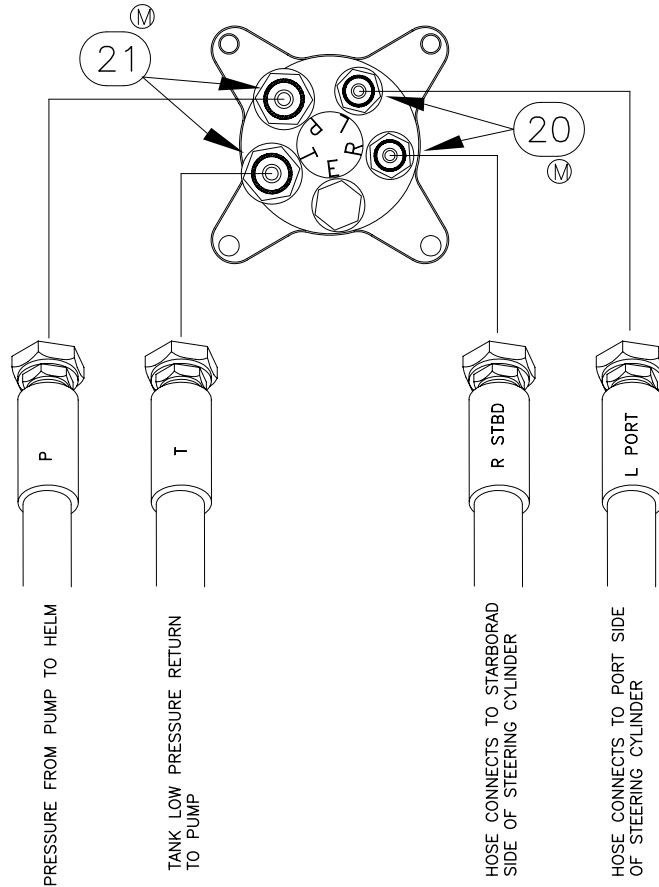
VIEW LOOKING AFT AT TRANSOM



TO STBD SIDE (SAME)



1. SYSTEM REQUIRES FILLING AND BLEEDING, REFER TO INSTRUCTIONS SUPPLIED WITH POWER STEERING PUMP.
2. USE ONLY SAE 0W-30 FULL SYNTHETIC POWER STEERING FLUID SUPPLIED W/ POWER STEERING PUMP.
3. TO PREVENT DEBRIS FORM ENTERING HOSES DO NOT REMOVE THE PROTECTOR CAPS FROM THE HOSE ENDS UNTIL CONNECTING THE HOSES.



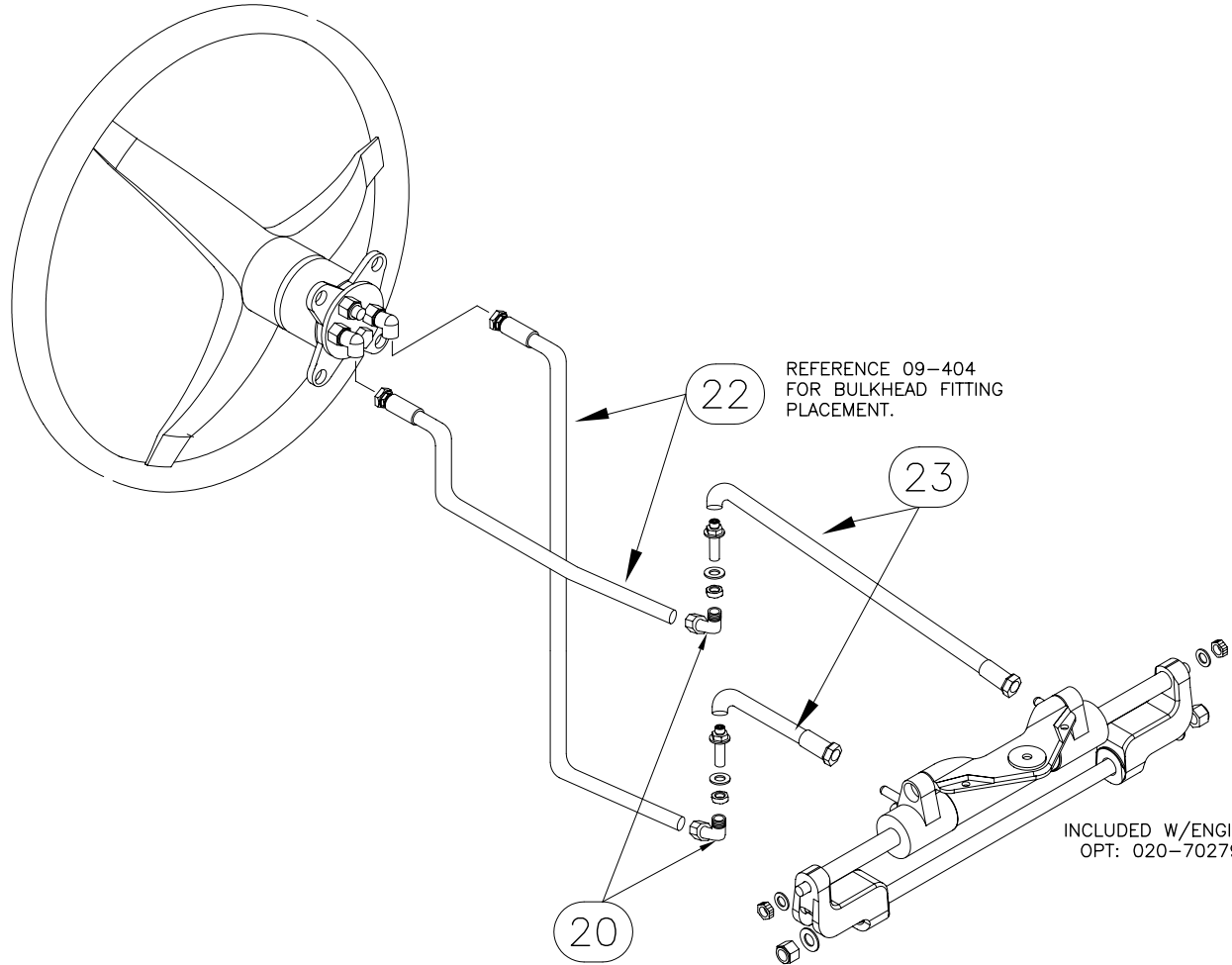
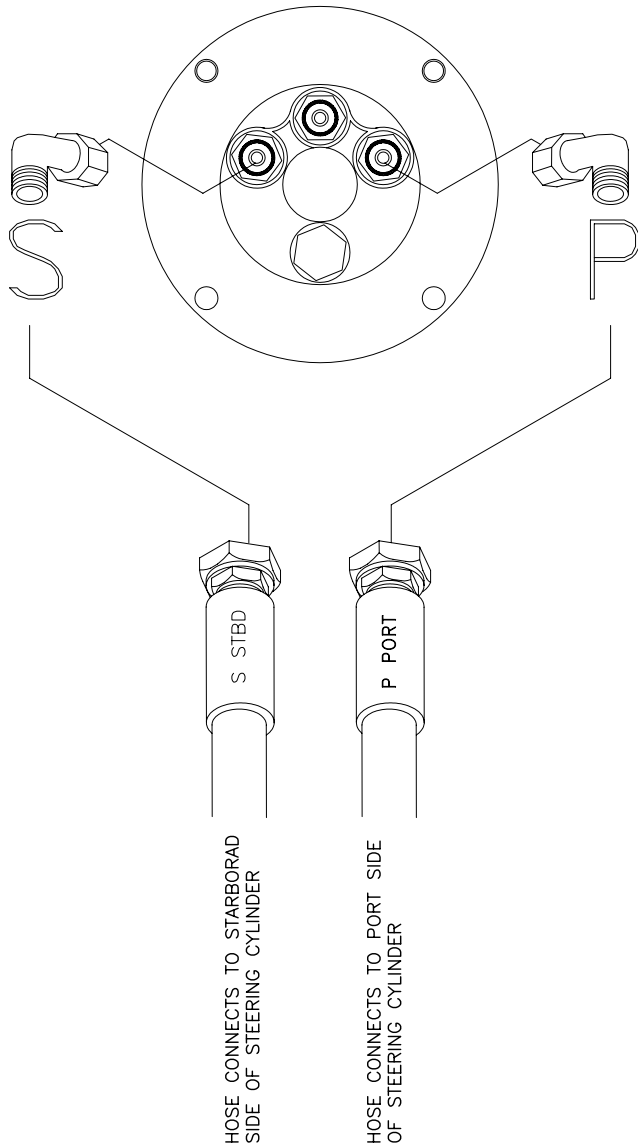
OPT: 020-70268 200 XL VERADO 4-STROKE (DTS) MERCURY  
 020-70285 (EU) 200 XL VERADO 4-STROKE (DTS) MERCURY  
 ① 100-70401 (MPJ ONLY) SINGLE VERADO PRE-RIG

THIS DOCUMENT IS THE PROPERTY OF BOSTON WHALER, INC. MFG. DEPT., EDGEWATER, FLORIDA. ALL RIGHTS ARE RESERVED. THIS DOCUMENT AND INFORMATION CONTAINED MUST NOT BE COPIED OR DISCLOSED TO OTHERS WITHOUT WRITTEN PERMISSION OF BOSTON WHALER, INC.

DWG. NO:  
10401

REV.  
R

CURRENT ECD  
051123



OPT: 020-70279 175 XL VERADO  
4-STROKE (DTS) MERCURY



INTERPRET DIMENSIONS AND TOLERANCES PER ANSI Y 14.5 UNLESS OTHERWISE SPECIFIED DIMENSIONS ARE IN INCHES.  
TOLERANCES: ANGLES = ± .5° .XXX = ± .010  
.X = ± .1 .XX = ± .03 X/X = ± 1/16  
DO NOT SCALE DRAWING

DRAWN: R.CRAVEN

DATE:08/06/01

SCALE: NONE

BOAT MODEL

MOLD NO.

2100R

DWG. TITLE:

Steering/ Throttle System and Trim Tab Installation

INIT. REL. ECN NO:

DWG. NO:

SHT. NO.

01060

10401

4 of 5

THIS DOCUMENT IS THE PROPERTY OF BOSTON WHALER, INC. MFG. DEPT., EDGEWATER, FLORIDA. ALL RIGHTS ARE RESERVED. THIS DOCUMENT AND INFORMATION CONTAINED MUST NOT BE COPIED OR DISCLOSED TO OTHERS WITHOUT WRITTEN PERMISSION OF BOSTON WHALER, INC.

DWG. NO:  
10401

REV.  
R

CURRENT ECD  
051123

Parts List						
ITEM	QTY		U/M	DESCRIPTION	B.W.I.	NO.
	STD	OPT				
	1		EA.	STEERING, O/B HOSE KIT 16' w/2 HOSES	0127019	
ⓁⓂⓍⓎⓏ	2		EA.	CABLE, CNTRL MERC GEN II PREMIUM 16'	1804041	
Ⓝ	3		EA.	HARNESS, ENG MERC S-CRFT 14 PIN 20'	1802105	
	4		EA.	STEERING, HYD CYLINDER O/B PIVOT MN	1095728	
	5	19	FT.	CORD, NYLON 1/8" WHT	1033372	
ⓐ	6	1	GL	FLUID, HYDRAULIC AEROSHELL #41 (NOT SHOWN)	1807698	
	7	1	EA.	TRIM TAB, ASSY 9x9 BW 210CQ098	1058262	
	8	14	EA.	SCREW, TAPPING #14A x 1.5" PPH SC	1008697	
	9	4	EA.	SCREW, MACHINE #1/4-20 x 1/2" PPH SC	1010586	
	10	4	EA.	WASHER, LOCK/SPLIT 1/4" SC	1260595	
	11	4	EA.	NUT, LOCK #1/4-20 SC STD PATT	1009786	
	12	4	EA.	SCREW, TAPPING #10A x 3/4" PTH SC	1008762	
	13	1	EA.	TAG, BW DO NOT PULL RIGGING	0999755	
	14	5	EA.	TIE, CABLE 11" MED NYLON BLK	0157321	
	15	5	EA.	TIE, CLIP BLK	1031764	
	16	5	EA.	SCREW, TAPPING #8A x 3/4" PPH SC	1010651	
ⓀⓁ	17	1	EA.	STEERING, HYD CYL O/B PIVOT MNT	1691041	
Ⓛ	18	1	EA.	STEERING, O/B HOSE KIT PWR PK/HELM 18' W/2 HS	1773925	
ⓂⓎ	19	1	EA.	STEERING, O/B HOSE KIT CYL/HELM 18' W/2 HOSES	1773924	
Ⓜ	20	2	EA.	STEERING, ELBOW BR 9/16" ORFS FEMALE X MALE	1790999	
Ⓜ	21	2	EA.	STEERING, ELBOW BR 11/16" ORFS FEMALE X MALE	1804872	
Ⓟ	22	1	EA.	STEERING, O/B HOSE KIT CYL/HELM 14' W/2 HOSES	1781351	
Ⓟ	23	1	EA.	STEERING, O/B HOSE KIT CYL/HELM 2' W/2 HOSES	1775376	



INTERPRET DIMENSIONS AND TOLERANCES PER ANSI Y 14.5 UNLESS OTHERWISE SPECIFIED DIMENSIONS ARE IN INCHES.  
 TOLERANCES: ANGLES = ± .5° .XXX = ± .010  
 .X = ± .1 X = ± 1/16  
 .XX = ± .03  
 DO NOT SCALE DRAWING

DRAWN: R.CRAVEN

DATE:08/06/01

SCALE: NONE

BOAT MODEL

2100R

MOLD NO.

DWG. TITLE:

Steering/ Throttle System and Trim Tab Installation

INIT. REL. ECN NO:

01060

DWG. NO:

10401

SHT. NO.

5 of 5