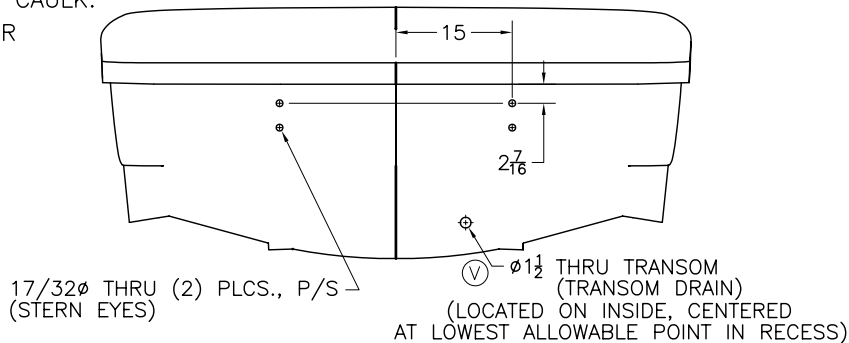


THIS DOCUMENT IS THE PROPERTY OF BOSTON WHALER, INC. MFG. DEPT., EDGEWATER, FLORIDA. ALL RIGHTS ARE RESERVED. THIS DOCUMENT AND INFORMATION CONTAINED MUST NOT BE COPIED OR DISCLOSED TO OTHERS WITHOUT WRITTEN PERMISSION OF BOSTON WHALER, INC.

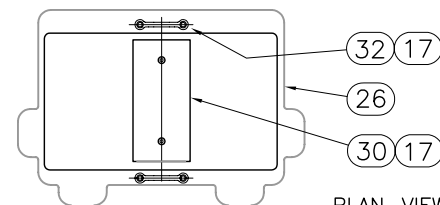
DWG. NO:	REV.	CURRENT ECD
06101	V	050544

REVISIONS					
REV.	DESCR.	BY	DATE	APPVD.	ECN NO.
T	CHANGED TRANSOM TRIM FASTENING SCREW QTY, SHEET 3 & 4	SLJ	01/10/06		051148
U	ADDED "DO NOT INSTALL ADHESIVE" NOTE, SHEET 2	SLJ	03/01/06	ME	051148
V	ADD 63-64, 1 WAS 1042068-STD QNT 1, 2 WAS 1042084, 3 WAS QNT 2, Ø WAS 1 3/8"	SWH	03/06/06	ME	050544

- ALL EXPOSED/CUT FRP OR WOOD SURFACES SHALL BE SEALED WITH CATALYZED WHITE GEL COAT.
- ALL THRU HULL FITTINGS & FASTENERS SHALL BE SEALED WHEN INSTALLED USING WHITE SILICONE CAULK.
- SEE DWG. 01-201 FOR FIXTURE LIST.

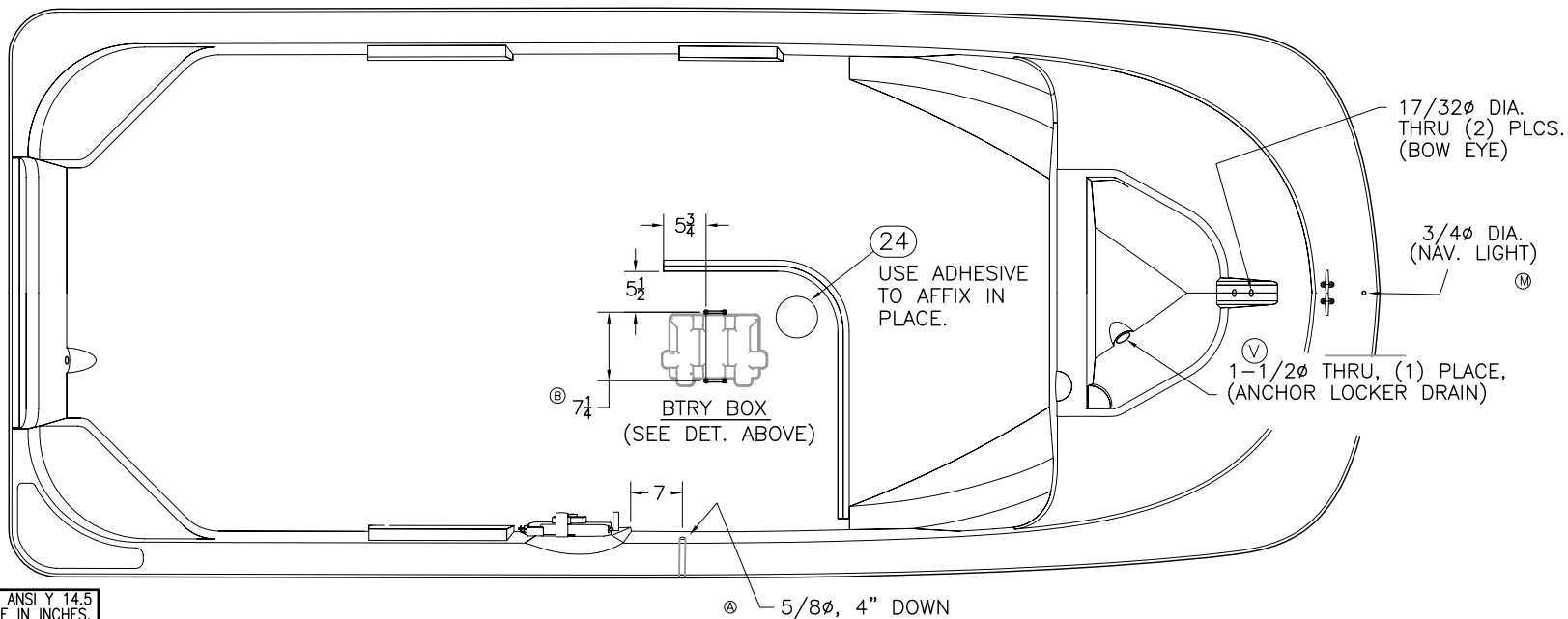


TRANSOM VIEW



**PLAN-VIEW
BTRY BOX INSTALL'N.**

ITEM 30 MOUNTED ON FRP SURFACE USING ITEM 17. BOX WILL THEN REGISTER ON CLEAT FIRMLY WHEN STRAP IS SECURED.



INTERPRET DIMENSIONS AND TOLERANCES PER ANSI Y 14.5 UNLESS OTHERWISE SPECIFIED DIMENSIONS ARE IN INCHES.
 TOLERANCES: ANGLES = ± .5° .XXX = ± .010
 .X = ± .1 .XX = ± .03 X = ± 1/16
 DO NOT SCALE DRAWING



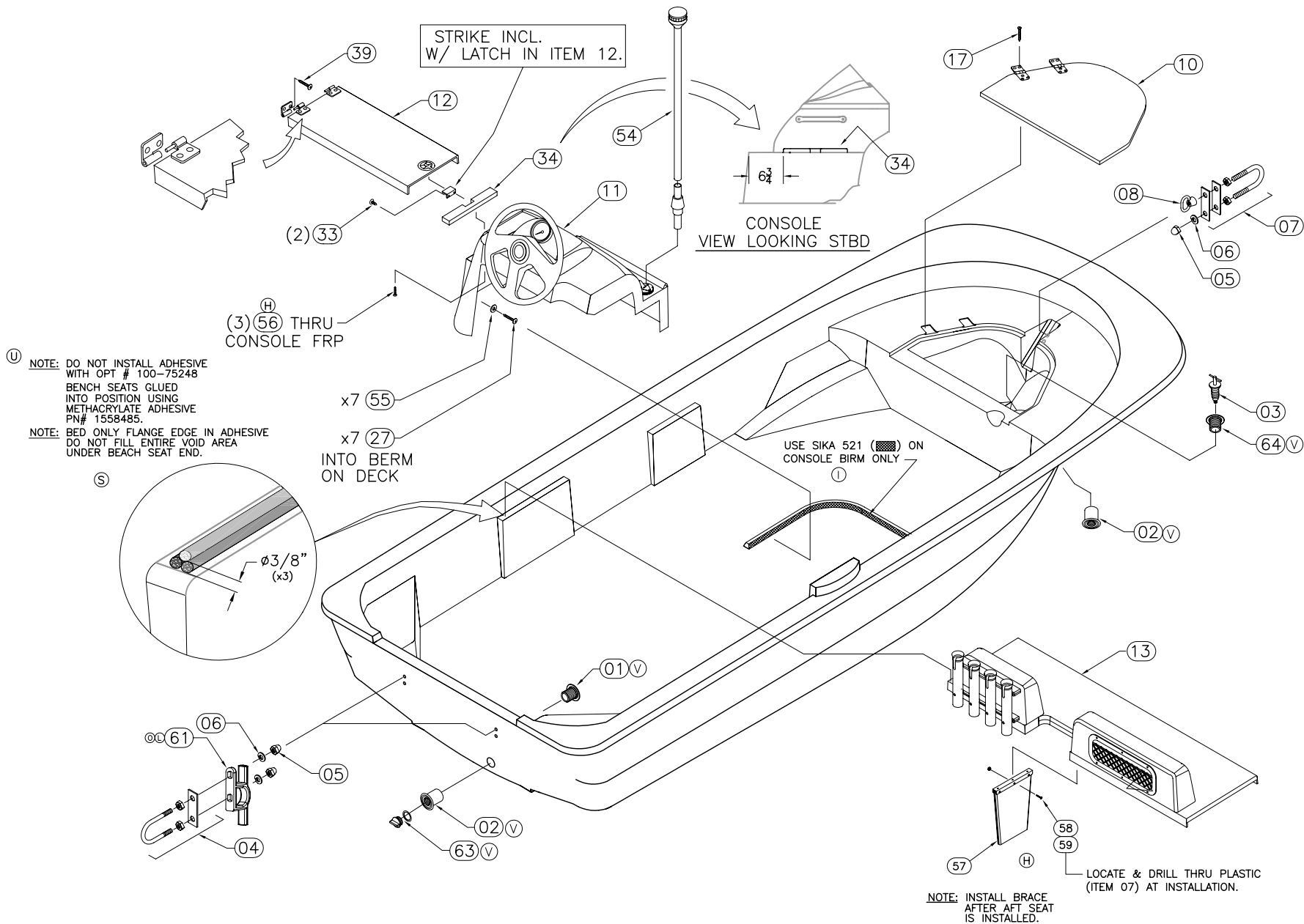
CHECKED: R. AVILA	DATE: 3/25/02	DRAWN: H READ	DATE: 02/04/02	SCALE: NONE	BOAT MODEL: 150SP	MOLD NO.
APPD: K. RANIERI	DATE: 3/25/02	DWG. TITLE: HULL CUTOUTS & OUTFIT			INIT. REL. ECN NO: 011003	DWG. NO: 06101
DESIGN: L. SCHOLZ	DATE: 3/28/02					SHT. NO. 1 of 4
INT. ENG: M. GATICA	DATE: 5/14/02					

THIS DOCUMENT IS THE PROPERTY OF BOSTON WHALER, INC. MFG. DEPT., EDGEWATER, FLORIDA. ALL RIGHTS ARE RESERVED. THIS DOCUMENT AND INFORMATION CONTAINED MUST NOT BE COPIED OR DISCLOSED TO OTHERS WITHOUT WRITTEN PERMISSION OF BOSTON WHALER, INC.

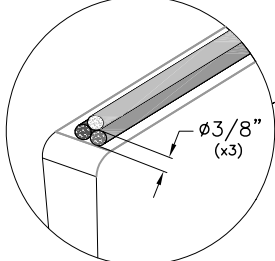
DWG. NO:
06101

REV.
V

CURRENT ECD
050544



U NOTE: DO NOT INSTALL ADHESIVE WITH OPT # 100-75248 BENCH SEATS GLUED INTO POSITION USING METHACRYLATE ADHESIVE PN# 1558485.
NOTE: BED ONLY FLANGE EDGE IN ADHESIVE DO NOT FILL ENTIRE VOID AREA UNDER BEACH SEAT END.



INTERPRET DIMENSIONS AND TOLERANCES PER ANSI Y 14.5 UNLESS OTHERWISE SPECIFIED DIMENSIONS ARE IN INCHES.
TOLERANCES: ANGLES = ± .5° .XXX = ± .010
.X = ± .1 X = ± 1/16
.XX = ± .03
DO NOT SCALE DRAWING

DRAWN: H READ DATE: 02/04/02 SCALE: NONE
DWG. TITLE: HULL CUTOUTS & OUTFIT

BOAT MODEL
150SP
INIT. REL. ECN NO:
011003

MOLD NO.
DWG. NO:
06101

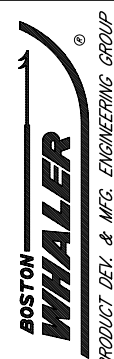
SHT. NO.
2 OF 4

PARTS LIST

ITEM	QTY.		U/M	DESCRIPTION	BWI NO.
	STD	OPT.			
(V) 1	2	-	EA.	THRU-HULL, MARELON BW-06 SHORT MALE	1806031
(V) 2	2	-	EA.	THRU-HULL, MARELON BW-06 SHORT FEMALE	1806032
(V) 3	1	-	EA.	PLUG, BRASS 1" DRAIN TURN-TITE	0133371
(L) 4	2	-	EA.	EYE, BOW 1/2" X 3 7/16" SS	0126557
5	5	-	EA.	NUT, ACORN #1/2-13 SC	1662402
6	5	-	EA.	WASHER, LOCK/SPLIT 1/2" SC	1326214
7	1	-	EA.	EYE, BOW 1/2" x 6" SS	0995472
(K) 8	1	-	EA.	EYE, LIFTING 1/2" SS	1750949
9	1	-	EA.	STOP, DOOR HOLDER RBR BLUE	1142348
10	1	-	EA.	ANCHOR LOCKER COVER SUB-ASSY.	09-402
11	1	-	EA.	CONSOLE SUB-ASSY.	09-201
12	1	-	EA.	FWD BENCH SEAT SUB-ASSY.	09-425
13	1	-	EA.	HELM BENCH SEAT SUB-ASSY.	09-425
(E) 14	1	-	EA.	LIGHT, NAV A/R STERN 86" N/BEND FOLDING	1604404
15	1	-	EA.	CAP, RUB RAIL BW150AP-02 TRNSM TRIM	1691318
(S)(B) 16	2	4	EA.	SCREW, TAPPING #10A X 2" PTH SC	1008754
17	10	-	EA.	SCREW, TAPPING #10A x 1" POH SC	1008507
18	1	-	EA.	PLATE, NMMA 02 BW150SP	1689770
(C) 19	1	-	EA.	PLATE, BUILDER CE 02 BW150SP	1689771
20	4	-	EA.	RIVET, POP/BLIND #1/8 x 1/4" ALUM	1007855
(L) 21	1	-	PR.	CHOCK, 4.5" SS	0639237
22	1	-	EA.	CLEAT, 6" SS HOLLOW BASE	1027002
(L)(F) 23	18	24	EA.	SCREW, TAPPING #10A x 1.5" PPH	1010610
24	1	-	EA.	COVER ABS BW 3.5" POUR HOLE WHT	1310606
(L) 25	1	-	EA.	LIGHT, BW-03 BOW W/HOOD & RING SS	1748822
26	1	-	EA.	HOLDER, BATTERY GR24 FULLY ENCL	0650598
(H)(G)(E) 27	10	-	EA.	SCREW, TAPPING #10A x 1" PTH SC	1008739
(E) 28	1	-	EA.	LIGHT, NAV STERN BASE RND W/CAP	1261361
(E) 29	1	-	EA.	LIGHT, NAV A/R STERN 54" N/BEND	1691343
30	1	-	EA.	CLEAT, HDPE BW-02 BATTERY BOX WHT	1618602
(T) 31	3	-	EA.	SCREW, TAPPING #8A x 5/8" PTH SC	1010925
32	2	-	EA.	BRACKET, BW-97 BATT HOLDDOWN 1.25"CHR/PLT	1042837
(L) 33	8	-	EA.	SCREW, TAPPING #8A x 5/8" PTH SC	1010925
34	1	-	EA.	SUPPORT, HDPE BW150SP-02 FWD SEAT CATCH	1691461
(E) 35	1	-	EA.	CAP, DRAIN BOOT LIGHT MAST BLK	1042761
36	1	-	EA.	RAIL, SIDE BW150-02 SS PORT	1689773
37	1	-	EA.	RAIL, SIDE BW150-02 SS STBD	1690995
38	-	1	EA.	RAIL, BOW BW150-02 SS	1689774
39	4	-	EA.	SCREW, TAPPING #10A x 1.5" POH SC	1010610
40	-	1	EA.	SWITCH, BATTERY ON/OFF W/O LOCK W/O DISC	0162701
(E) 41	3	-	EA.	SCREW, TAPPING #6A x 1/2" PTH SC	1008796
(R) 42	60	-	EA.	SCREW, TAP #10A X 1.5" W/STP EPXY ORNG PFH SC	1814515
43	1	-	EA.	INSERT, RUB RAIL CHAR FLEX 40'	1020817
44	1	-	EA.	RUBRAIL, PLASTIC CHAR 40'	1020858
(E) 45	1	-	EA.	VENT, CLAMSHELL ROPE LCKR 1 5/8" X 1.5"	0126870
(Q) 46	1	-	EA.	CONTROL, SIDE MNT REMOTE 14 PIN 15'	1802560
(E) 47	3	-	EA.	SCREW, TAPPING #8A x 1" POH SC	1213065
48	3	-	EA.	SCREW, TAPPING #14A x 3" POH SC	1335405
(E) 49	1	-	FT.	TUBING, VINYL SPEEDO BLK	1043017
50	4	-	EA.	SCREW, MACHINE #1/4-20 x 1" PFH SC	1009950
(F) 51	3	-	EA.	SCREW, TAPPING #4A x 1" PPH SC	1010636
(L) 52	4	-	EA.	SCREW, MACHINE #10-24 X 1" PFH SC	1326321
(E) 53	1	-	PR.	CLIP, POLE STRG BLK - MAST LIGHT	0590646
(E) 54	1	-	EA.	LIGHT, NAV A/R STERN 69" STRAIGHT	1727618
(G) 55	7	-	EA.	WASHER, FENDER #10 X 1" SC	1260454
(H) 56	3	-	EA.	SCREW, TAPPING #10A X 3/4" PTH SC	1008762
(H) 57	1	-	EA.	SUPPORT, HDPE BW150SP-02 SEAT SEAFM	1691285
(H) 58	3	-	EA.	SCREW, MACH.#10-24 X 1.25" POH SC	1008424
(H) 59	3	-	EA.	NUT, HEX NYLON LOCK #10-24 SC	1007772
(L) 60	3	-	EA.	SCREW, MACHINE #1/4-20 X 2.5" PFH SC	1326156
(L) 61	2	-	EA.	EYE, LIFTING CLEAT 1/2" SS	1753511
(L) 62	1	-	EA.	BIN, ABS BW150SP-04 STRG WHT	1755563
(V) 63	1	-	EA.	PLUG, MARELON BW-06 DRAIN 1" W/GASKET	1806033
(V) 64	1	-	EA.	THRU-HULL, MARELON BW-06 LONG MALE	1806030

DWG. NO: 06101
 REV: V
 CURRENT ECD: 050544

THIS DOCUMENT IS THE PROPERTY OF BOSTON WHALER, INC. MFG. DEPT. EDGEWATER, FLORIDA. ALL RIGHTS ARE RESERVED. THIS DOCUMENT AND INFORMATION CONTAINED MUST NOT BE COPIED OR DISCLOSED TO OTHERS WITHOUT WRITTEN PERMISSION OF BOSTON WHALER, INC.

DRAWN: H READ DWG. TITLE: HULL CUTOUTS & OUTFIT	DATE: 02/04/02 SCALE: NONE	BOAT MODEL: 150SP MOLD NO.:	INIT. REL. ECN NO.: 011003 DWG. NO.: 06101 SHT. NO.: 4 of 4
INTERPRET DIMENSIONS AND TOLERANCES PER ANSI Y 14.5 UNLESS OTHERWISE SPECIFIED DIMENSIONS ARE IN INCHES. TOLERANCES: ANGLES = ± .5° .XXX = ± .010 .X = ± .1 .XX = ± .03 X = ± 1/16 DO NOT SCALE DRAWING			
 BOSTON WHALER PRODUCT DEV. & MFG. ENGINEERING GROUP			